

GREAT OFFICE SPACE!

LOCATED IN THE GROWING SOUTH BUSINESS AREA
IMMEDIATE OCCUPANCY ~ CALL FOR A VIEWING TODAY!



**COMMERCIAL
PROPERTIES, INC**
(505) 216-1500

2019 GALISTEO ST. SUITE L-1 SANTA FE, NM 87505

INFORMATION ENCLOSED IS DEEMED TO BE FROM RELIABLE SOURCES, HOWEVER, IT IS SUBJECT TO CHANGE, WITHDRAWAL FROM THE MARKET AND INDEPENDENT VERIFICATION BY PROSPECTIVE BUYER OR LESSEE, AS A PART OF THEIR DUE DILIGENCE IN DETERMINING THE FEASIBILITY AND ACCURACY OF INFORMATION OF THE PROPERTY FOR THEIR USE.

www.CPI-NM.com

3600 Rodeo Lane

Units B4

Santa Fe, NM 87507

LEASE PRICE

\$1,150/mo.

BUILDING AREA

±762 SF

BUILDING TYPE

Condo

CLOSE TO:

Cyber Mesa, Sam's Club,
Zafarano Drive

FEATURES

- (3) Offices
- Open parking
- Has refrigerator, microwave
- Western Windows, Operable
- Vestibule, Kitchenette,
Reception area with desk,
internet ready.

MIKE BOYLE
(505) 269-6463 (CELL)
LICENSE #47579

JAMES F. WHEELER, CCIM
(505) 470-8081 (CELL)
LICENSE #18725

AERIAL & MAP



**COMMERCIAL
PROPERTIES, INC**
(505) 216-1500

2019 GALISTEO ST. SUITE L-1 SANTA FE, NM 87505

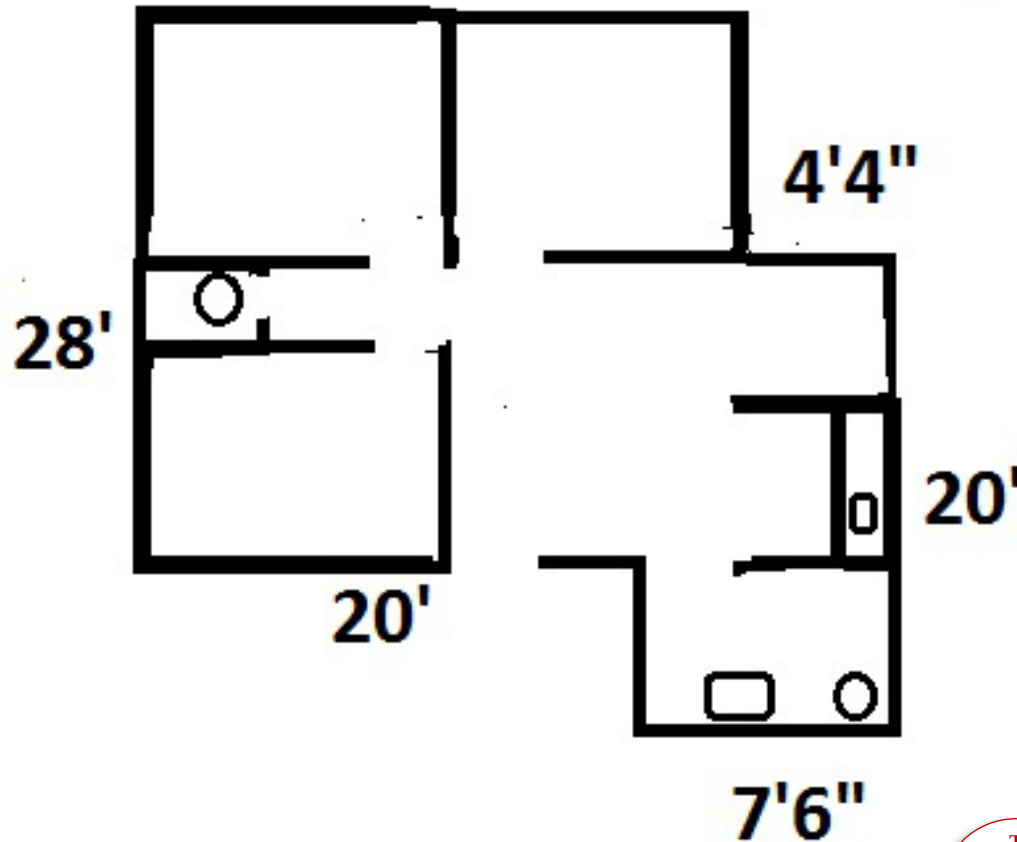
INFORMATION ENCLOSED IS DEEMED TO BE FROM RELIABLE SOURCES, HOWEVER, IT IS SUBJECT TO CHANGE, WITHDRAWAL FROM THE MARKET AND INDEPENDENT VERIFICATION BY PROSPECTIVE BUYER OR LESSEE, AS A PART OF THEIR DUE DILIGENCE IN DETERMINING THE FEASIBILITY AND ACCURACY OF INFORMATION OF THE PROPERTY FOR THEIR USE.

www.CPI-NM.com

MIKE BOYLE
(505) 269-6463 (CELL)
LICENSE #47579

JAMES F. WHEELER, CCIM
(505) 470-8081 (CELL)
LICENSE #18725

3600 B-4 Rodeo Lane, Santa Fe NM



This image IS for Visual Use Only
Measurements and acreage are approximate.
Use surveys or building plans for actual square feet or acreage.

**COMMERCIAL
PROPERTIES, INC**
(505) 216-1500

2019 GALISTEO ST. SUITE L-1 SANTA FE, NM 87505

INFORMATION ENCLOSED IS DEEMED TO BE FROM RELIABLE SOURCES, HOWEVER, IT IS SUBJECT TO CHANGE, WITHDRAWAL FROM THE MARKET AND INDEPENDENT VERIFICATION BY PROSPECTIVE BUYER OR LESSEE, AS A PART OF THEIR DUE DILIGENCE IN DETERMINING THE FEASIBILITY AND ACCURACY OF INFORMATION OF THE PROPERTY FOR THEIR USE.

www.CPI-NM.com

MIKE BOYLE
(505) 269-6463 (CELL)
LICENSE #47579

JAMES F. WHEELER, CCIM
(505) 470-8081 (CELL)
LICENSE #18725

EXTERIOR



**COMMERCIAL
PROPERTIES, INC**
(505) 216-1500

2019 GALISTEO ST. SUITE L-1 SANTA FE, NM 87505

INFORMATION ENCLOSED IS DEEMED TO BE FROM RELIABLE SOURCES, HOWEVER, IT IS SUBJECT TO CHANGE, WITHDRAWAL FROM THE MARKET AND INDEPENDENT VERIFICATION BY PROSPECTIVE BUYER OR LESSEE, AS A PART OF THEIR DUE DILIGENCE IN DETERMINING THE FEASIBILITY AND ACCURACY OF INFORMATION OF THE PROPERTY FOR THEIR USE.

www.CPI-NM.com

MIKE BOYLE
(505) 269-6463 (CELL)
LICENSE #47579

JAMES F. WHEELER, CCIM
(505) 470-8081 (CELL)
LICENSE #18725

RECEPTION
OFFICES 1,2 & 3



**COMMERCIAL
PROPERTIES, INC**
(505) 216-1500

2019 GALISTEO ST. SUITE L-1 SANTA FE, NM 87505

INFORMATION ENCLOSED IS DEEMED TO BE FROM RELIABLE SOURCES, HOWEVER, IT IS SUBJECT TO CHANGE, WITHDRAWAL FROM THE MARKET AND INDEPENDENT VERIFICATION BY PROSPECTIVE BUYER OR LESSEE, AS A PART OF THEIR DUE DILIGENCE IN DETERMINING THE FEASIBILITY AND ACCURACY OF INFORMATION OF THE PROPERTY FOR THEIR USE.

www.CPI-NM.com

MIKE BOYLE
(505) 269-6463 (CELL)
LICENSE #47579

JAMES F. WHEELER, CCIM
(505) 470-8081 (CELL)
LICENSE #18725

BATHROOM, KITCHEN



**COMMERCIAL
PROPERTIES, INC**
(505) 216-1500

2019 GALISTEO ST. SUITE L-1 SANTA FE, NM 87505

INFORMATION ENCLOSED IS DEEMED TO BE FROM RELIABLE SOURCES, HOWEVER, IT IS SUBJECT TO CHANGE, WITHDRAWAL FROM THE MARKET AND INDEPENDENT VERIFICATION BY PROSPECTIVE BUYER OR LESSEE, AS A PART OF THEIR DUE DILIGENCE IN DETERMINING THE FEASIBILITY AND ACCURACY OF INFORMATION OF THE PROPERTY FOR THEIR USE.

www.CPI-NM.com

MIKE BOYLE
(505) 269-6463 (CELL)
LICENSE #47579

JAMES F. WHEELER, CCIM
(505) 470-8081 (CELL)
LICENSE #18725