

CENTRALLY LOCATED OFFICE SUITE ST. MICHAELS DR. AREA, LOADS OF AMENITIES



**1925 Aspen Drive
Unit 302B**

Santa Fe, NM 87505

LEASE RATE

\$900/mo.

BUILDING AREA

± 645 SF

BUILDING TYPE

Office Condo

ZONING

SC-2

(PER CITY OF SANTA FE)

FEATURES

- 2 Offices + Reception Area
- Coffee Bar, Storage Closet
- Shopping & Eating Near by
- Negotiable Occupancy
- Wood floors

**Need a small office, then this
could be right for you!**

**COMMERCIAL
PROPERTIES, INC**
(505) 216-1500

2019 GALISTEO ST. SUITE L-1 SANTA FE, NM 87505

INFORMATION ENCLOSED IS DEEMED TO BE FROM RELIABLE SOURCES, HOWEVER, IT IS SUBJECT TO CHANGE, WITHDRAWAL FROM THE MARKET AND INDEPENDENT VERIFICATION BY PROSPECTIVE BUYER OR LESSEE, AS A PART OF THEIR DUE DILIGENCE IN DETERMINING THE FEASIBILITY AND ACCURACY OF INFORMATION OF THE PROPERTY FOR THEIR USE.

www.CPI-NM.com

MIKE BOYLE
(505) 269-6463 (CELL)
LICENSE #47579

JAMES F. WHEELER, CCIM
(505) 470-8081 (CELL)
LICENSE #18725

SITE PLAN & MAP



This image is for Visual Use Only

Measurements and acreage are approximate.

Use surveys or building plans for actual square feet or acreage.



**COMMERCIAL
PROPERTIES, INC**
(505) 216-1500

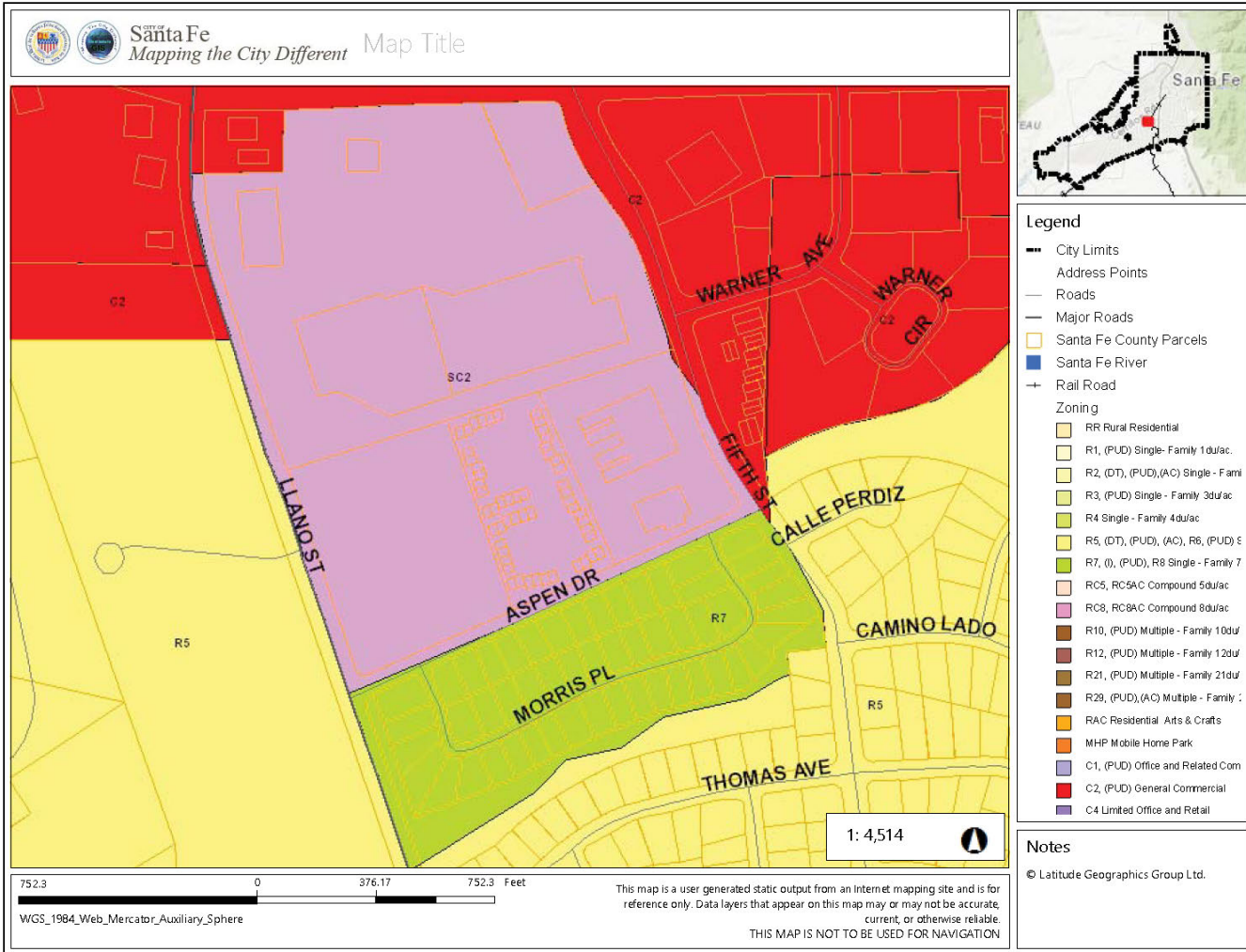
2019 GALISTEO ST. SUITE L-1 SANTA FE, NM 87505

INFORMATION ENCLOSED IS DEEMED TO BE FROM RELIABLE SOURCES, HOWEVER, IT IS SUBJECT TO CHANGE, WITHDRAWAL FROM THE MARKET AND INDEPENDENT VERIFICATION BY PROSPECTIVE BUYER OR LESSEE, AS A PART OF THEIR DUE DILIGENCE IN DETERMINING THE FEASIBILITY AND ACCURACY OF INFORMATION OF THE PROPERTY FOR THEIR USE.

WWW.CPI-NM.COM

MIKE BOYLE
(505) 269-6463 (CELL)
LICENSE #47579

JAMES F. WHEELER, CCIM
(505) 470-8081 (CELL)
LICENSE #18725



**COMMERCIAL
PROPERTIES, INC**
(505) 216-1500

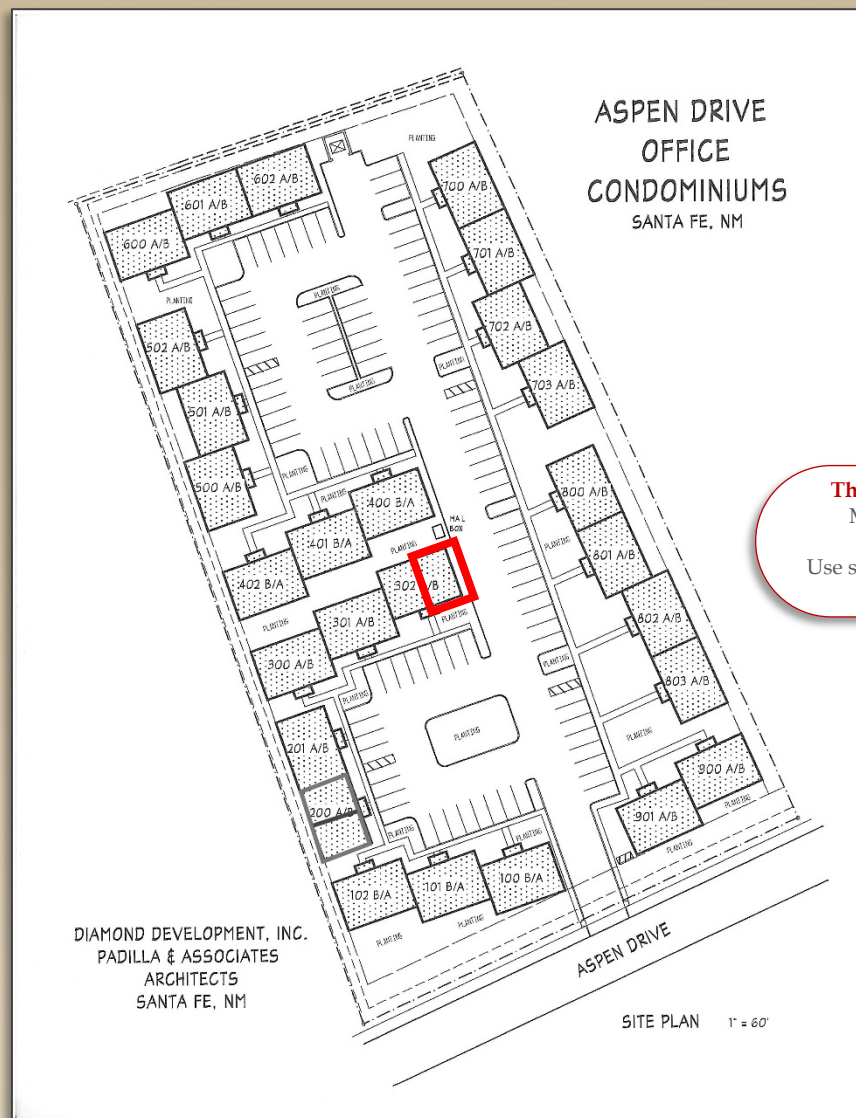
2019 GALISTEO ST. SUITE L-1 SANTA FE, NM 87505

INFORMATION ENCLOSED IS DEEMED TO BE FROM RELIABLE SOURCES, HOWEVER, IT IS SUBJECT TO CHANGE, WITHDRAWAL FROM THE MARKET AND INDEPENDENT VERIFICATION BY PROSPECTIVE BUYER OR LESSEE, AS A PART OF THEIR DUE DILIGENCE IN DETERMINING THE FEASIBILITY AND ACCURACY OF INFORMATION OF THE PROPERTY FOR THEIR USE.

www.CPI-NM.com

MIKE BOYLE
(505) 269-6463 (CELL)
LICENSE #47579

JAMES F. WHEELER, CCIM
(505) 470-8081 (CELL)
LICENSE #18725



This image is for Visual Use Only

Measurements and acreage are approximate.

Use surveys or building plans for actual square feet or acreage.

**COMMERCIAL
PROPERTIES, INC**
(505) 216-1500

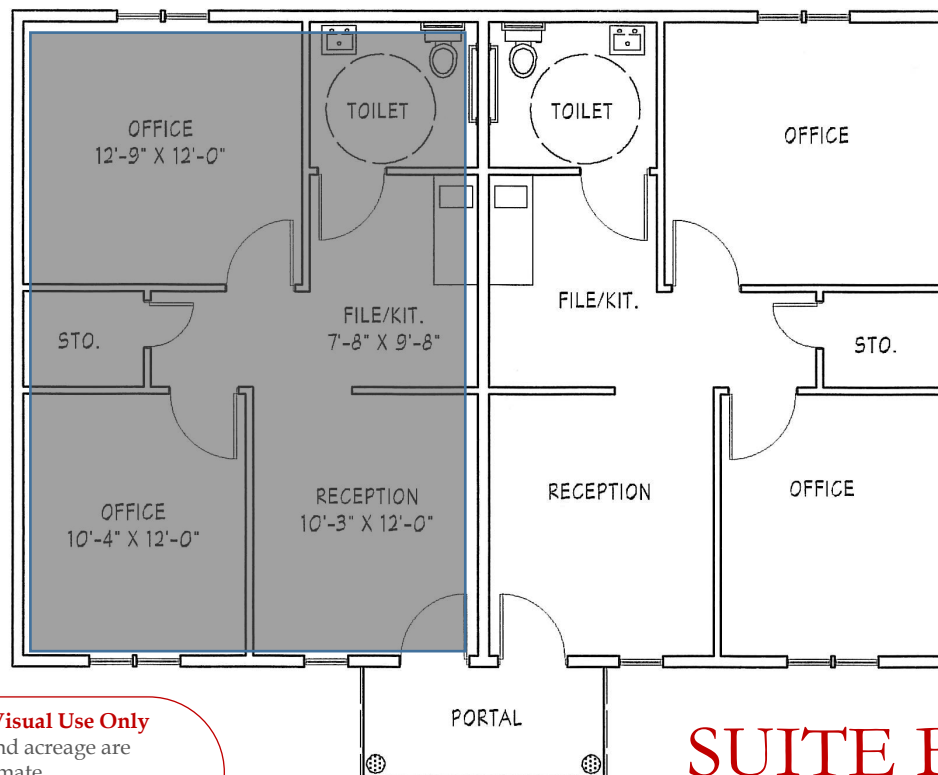
2019 GALISTEO ST. SUITE L-1 SANTA FE, NM 87505

INFORMATION ENCLOSED IS DEEMED TO BE FROM RELIABLE SOURCES, HOWEVER, IT IS SUBJECT TO CHANGE, WITHDRAWAL FROM THE MARKET AND INDEPENDENT VERIFICATION BY PROSPECTIVE BUYER OR LESSEE, AS A PART OF THEIR DUE DILIGENCE IN DETERMINING THE FEASIBILITY AND ACCURACY OF INFORMATION OF THE PROPERTY FOR THEIR USE.

www.CPI-NM.com

MIKE BOYLE
(505) 269-6463 (CELL)
LICENSE #47579

JAMES F. WHEELER, CCIM
(505) 470-8081 (CELL)
LICENSE #18725



This image is for Visual Use Only

Measurements and acreage are approximate.

Use surveys or building plans for actual square feet or acreage.

SUITE B

TYP. BUILDING FLOOR PLAN 1,290 SF./ BUILDING

1/8" = 1'-0"

**COMMERCIAL
PROPERTIES, INC**
(505) 216-1500

2019 GALISTEO ST. SUITE L-1 SANTA FE, NM 87505

INFORMATION ENCLOSED IS DEEMED TO BE FROM RELIABLE SOURCES, HOWEVER, IT IS SUBJECT TO CHANGE, WITHDRAWAL FROM THE MARKET AND INDEPENDENT VERIFICATION BY PROSPECTIVE BUYER OR LESSEE, AS A PART OF THEIR DUE DILIGENCE IN DETERMINING THE FEASIBILITY AND ACCURACY OF INFORMATION OF THE PROPERTY FOR THEIR USE.

www.CPI-NM.com

MIKE BOYLE
(505) 269-6463 (CELL)
LICENSE #47579

JAMES F. WHEELER, CCIM
(505) 470-8081 (CELL)
LICENSE #18725



Note: These interior images are similar to actual images in suite 302A.

**COMMERCIAL
PROPERTIES, INC**
(505) 216-1500

2019 GALISTEO ST. SUITE L-1 SANTA FE, NM 87505

INFORMATION ENCLOSED IS DEEMED TO BE FROM RELIABLE SOURCES, HOWEVER, IT IS SUBJECT TO CHANGE, WITHDRAWAL FROM THE MARKET AND INDEPENDENT VERIFICATION BY PROSPECTIVE BUYER OR LESSEE, AS A PART OF THEIR DUE DILIGENCE IN DETERMINING THE FEASIBILITY AND ACCURACY OF INFORMATION OF THE PROPERTY FOR THEIR USE.

www.CPI-NM.com

MIKE BOYLE
(505) 269-6463 (CELL)
LICENSE #47579

JAMES F. WHEELER, CCIM
(505) 470-8081 (CELL)
LICENSE #18725

KITCHENETTE, REST ROOM



Note: These interior images are similar to actual images in suite 302A.

**COMMERCIAL
PROPERTIES, INC**
(505) 216-1500

2019 GALISTEO ST. SUITE L-1 SANTA FE, NM 87505

INFORMATION ENCLOSED IS DEEMED TO BE FROM RELIABLE SOURCES, HOWEVER, IT IS SUBJECT TO CHANGE, WITHDRAWAL FROM THE MARKET AND INDEPENDENT VERIFICATION BY PROSPECTIVE BUYER OR LESSEE, AS A PART OF THEIR DUE DILIGENCE IN DETERMINING THE FEASIBILITY AND ACCURACY OF INFORMATION OF THE PROPERTY FOR THEIR USE.

www.CPI-NM.com

MIKE BOYLE
(505) 269-6463 (CELL)
LICENSE #47579

JAMES F. WHEELER, CCIM
(505) 470-8081 (CELL)
LICENSE #18725