

EL MERCADO SHOPPING CENTER
GREAT SHOWROOM/RETAIL SPACE
EXCELLENT LOCATION



**COMMERCIAL
PROPERTIES, INC**
(505) 216-1500

2019 GALISTEO ST. SUITE L-1 SANTA FE, NM 87505

INFORMATION ENCLOSED IS DEEMED TO BE FROM RELIABLE SOURCES, HOWEVER, IT IS SUBJECT TO CHANGE, WITHDRAWAL FROM THE MARKET AND INDEPENDENT VERIFICATION BY PROSPECTIVE BUYER OR LESSEE, AS A PART OF THEIR DUE DILIGENCE IN DETERMINING THE FEASIBILITY AND ACCURACY OF INFORMATION OF THE PROPERTY FOR THEIR USE.

www.CPI-NM.com

541 Cordova Road
Santa Fe, NM 87505

BOB

LEASE RATE
\$5,200/mo.
+ \$1,495/mo. NNN

BUILDING AREA
± 4,480 SF

ZONING
Shopping Center

FEATURES

- Large open area that is well lit
- Great street presence
- Functional Loading Dock
- Two Bathrooms
- Lots of storage
- Plenty of parking

MIKE BOYLE
(505) 269-6463 (CELL)
LICENSE #47579

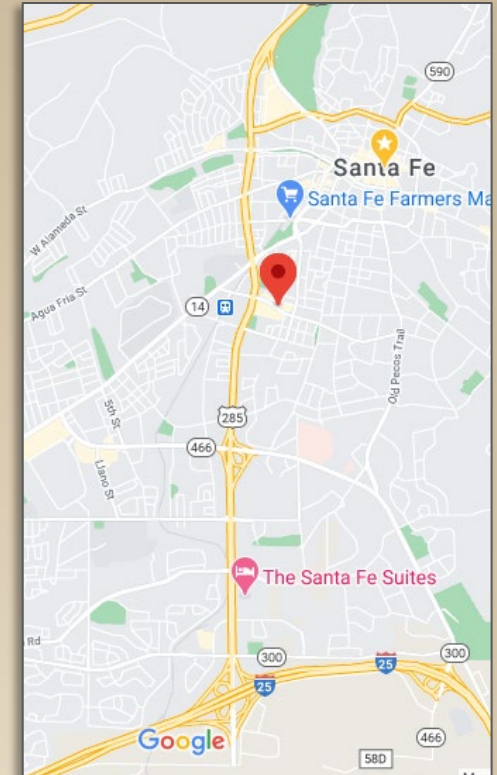
JAMES WHEELER, CCIM
(505) 470-8081 (CELL)
LICENSE #18725

MAP & SITE PLAN

This image is for Visual Use Only

Measurements and acreage are approximate.

Use surveys or building plans for actual square feet or acreage.



NORTH



**COMMERCIAL
PROPERTIES, INC**
(505) 216-1500

2019 GALISTEO ST. SUITE L-1 SANTA FE, NM 87505

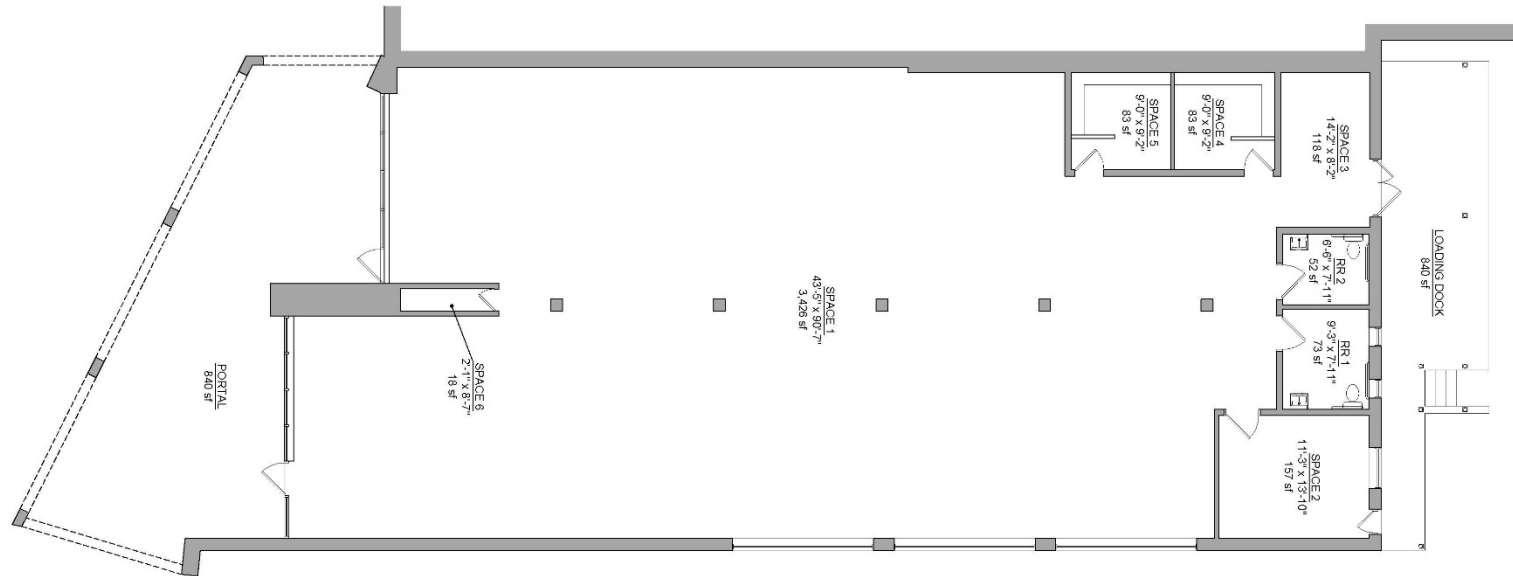
INFORMATION ENCLOSED IS DEEMED TO BE FROM RELIABLE SOURCES, HOWEVER, IT IS SUBJECT TO CHANGE, WITHDRAWAL FROM THE MARKET AND INDEPENDENT VERIFICATION BY PROSPECTIVE BUYER OR LESSEE, AS A PART OF THEIR DUE DILIGENCE IN DETERMINING THE FEASIBILITY AND ACCURACY OF INFORMATION OF THE PROPERTY FOR THEIR USE.

WWW.CPI-NM.COM

MIKE BOYLE
(505) 269-6463 (CELL)
LICENSE #47579

JAMES WHEELER, CCIM
(505) 470-8081 (CELL)
LICENSE #18725

FLOOR PLAN WITH LOADING DOCK



This image is for Visual Use Only

Measurements and acreage are approximate.
Use surveys or building plans for actual square feet or acreage.

**COMMERCIAL
PROPERTIES, INC**
(505) 216-1500

2019 GALISTEO ST. SUITE L-1 SANTA FE, NM 87505

INFORMATION ENCLOSED IS DEEMED TO BE FROM RELIABLE SOURCES, HOWEVER, IT IS SUBJECT TO CHANGE, WITHDRAWAL FROM THE MARKET AND INDEPENDENT VERIFICATION BY PROSPECTIVE BUYER OR LESSEE, AS A PART OF THEIR DUE DILIGENCE IN DETERMINING THE FEASIBILITY AND ACCURACY OF INFORMATION OF THE PROPERTY FOR THEIR USE.

www.CPI-NM.com

MIKE BOYLE
(505) 269-6463 (CELL)
LICENSE #47579

JAMES WHEELER, CCIM
(505) 470-8081 (CELL)
LICENSE #18725

INTERIOR - MAIN SPACE



**COMMERCIAL
PROPERTIES, INC**
(505) 216-1500

2019 GALISTEO ST. SUITE L-1 SANTA FE, NM 87505

INFORMATION ENCLOSED IS DEEMED TO BE FROM RELIABLE SOURCES, HOWEVER, IT IS SUBJECT TO CHANGE, WITHDRAWAL FROM THE MARKET AND INDEPENDENT VERIFICATION BY PROSPECTIVE BUYER OR LESSEE, AS A PART OF THEIR DUE DILIGENCE IN DETERMINING THE FEASIBILITY AND ACCURACY OF INFORMATION OF THE PROPERTY FOR THEIR USE.

www.CPI-NM.com

MIKE BOYLE
(505) 269-6463 (CELL)
LICENSE #47579

JAMES WHEELER, CCIM
(505) 470-8081 (CELL)
LICENSE #18725

INTERIOR – OFFICE & ADJACENT AREA



**COMMERCIAL
PROPERTIES, INC**
(505) 216-1500

2019 GALISTEO ST. SUITE L-1 SANTA FE, NM 87505

INFORMATION ENCLOSED IS DEEMED TO BE FROM RELIABLE SOURCES, HOWEVER, IT IS SUBJECT TO CHANGE, WITHDRAWAL FROM THE MARKET AND INDEPENDENT VERIFICATION BY PROSPECTIVE BUYER OR LESSEE, AS A PART OF THEIR DUE DILIGENCE IN DETERMINING THE FEASIBILITY AND ACCURACY OF INFORMATION OF THE PROPERTY FOR THEIR USE.

www.CPI-NM.com

MIKE BOYLE
(505) 269-6463 (CELL)
LICENSE #47579

JAMES WHEELER, CCIM
(505) 470-8081 (CELL)
LICENSE #18725

INTERIOR – BATHROOMS, CHANGIN STALLS



**COMMERCIAL
PROPERTIES, INC**
(505) 216-1500

2019 GALISTEO ST. SUITE L-1 SANTA FE, NM 87505

INFORMATION ENCLOSED IS DEEMED TO BE FROM RELIABLE SOURCES, HOWEVER, IT IS SUBJECT TO CHANGE, WITHDRAWAL FROM THE MARKET AND INDEPENDENT VERIFICATION BY PROSPECTIVE BUYER OR LESSEE, AS A PART OF THEIR DUE DILIGENCE IN DETERMINING THE FEASIBILITY AND ACCURACY OF INFORMATION OF THE PROPERTY FOR THEIR USE.

www.CPI-NM.com

MIKE BOYLE
(505) 269-6463 (CELL)
LICENSE #47579

JAMES WHEELER, CCIM
(505) 470-8081 (CELL)
LICENSE #18725

EXTERIOR – LOADING DOCK



**COMMERCIAL
PROPERTIES, INC**
(505) 216-1500

2019 GALISTEO ST. SUITE L-1 SANTA FE, NM 87505

INFORMATION ENCLOSED IS DEEMED TO BE FROM RELIABLE SOURCES, HOWEVER, IT IS SUBJECT TO CHANGE, WITHDRAWAL FROM THE MARKET AND INDEPENDENT VERIFICATION BY PROSPECTIVE BUYER OR LESSEE, AS A PART OF THEIR DUE DILIGENCE IN DETERMINING THE FEASIBILITY AND ACCURACY OF INFORMATION OF THE PROPERTY FOR THEIR USE.

www.CPI-NM.com

MIKE BOYLE
(505) 269-6463 (CELL)
LICENSE #47579

JAMES WHEELER, CCIM
(505) 470-8081 (CELL)
LICENSE #18725