

# **TURQUOISE TRAIL BUSINESS PARK - OFFICES**

**RANCHO VIEJO BLVD. & BISBEE CT.**



## **41 Bisbee Court Unit B-1 Offices**

Santa Fe, NM 87508

**FOR**

### **LEASE RATE**

**\$1,750/mo.**

### **BUILDING AREA**

**± 2,000 SF**

### **ZONING**

**Business Park**

### **FEATURES**

- 3 offices + 1 open space office
- Reception area
- 2 baths - one with shower
- Full kitchen
- Live/work/play
- This is the best buy on the market!

**COMMERCIAL  
PROPERTIES, INC**  
**(505) 216-1500**

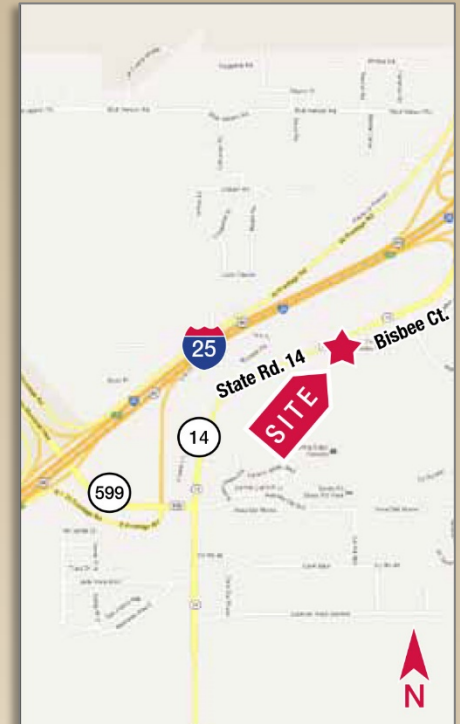
**2019 GALISTEO ST. SUITE L-1 SANTA FE, NM 87505**

INFORMATION ENCLOSED IS DEEMED TO BE FROM RELIABLE SOURCES, HOWEVER, IT IS SUBJECT TO CHANGE, WITHDRAWAL FROM THE MARKET AND INDEPENDENT VERIFICATION BY PROSPECTIVE BUYER OR LESSEE, AS A PART OF THEIR DUE DILIGENCE IN DETERMINING THE FEASIBILITY AND ACCURACY OF INFORMATION OF THE PROPERTY FOR THEIR USE.

**[www.CPI-NM.com](http://www.CPI-NM.com)**

**JAMES WHEELER, CCIM**  
**(505) 470-8081 (CELL)**  
**LICENSE # 18725**





**COMMERCIAL  
PROPERTIES, INC**  
**(505) 216-1500**

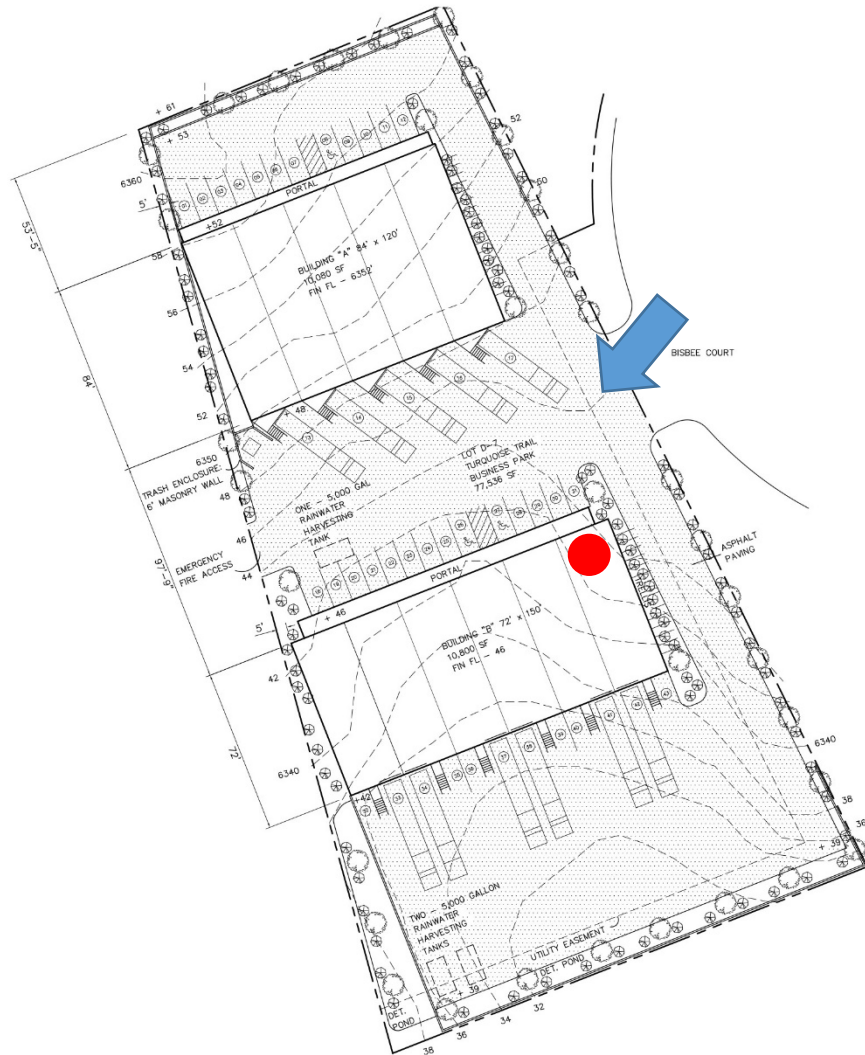
**2019 GALISTEO ST. SUITE L-1 SANTA FE, NM 87505**

INFORMATION ENCLOSED IS DEEMED TO BE FROM RELIABLE SOURCES, HOWEVER, IT IS SUBJECT TO CHANGE, WITHDRAWAL FROM THE MARKET AND INDEPENDENT VERIFICATION BY PROSPECTIVE BUYER OR LESSEE, AS A PART OF THEIR DUE DILIGENCE IN DETERMINING THE FEASIBILITY AND ACCURACY OF INFORMATION OF THE PROPERTY FOR THEIR USE.

**www.CPI-NM.com**

**JAMES WHEELER, CCIM**  
**(505) 470-8081 (CELL)**  
**LICENSE # 18725**





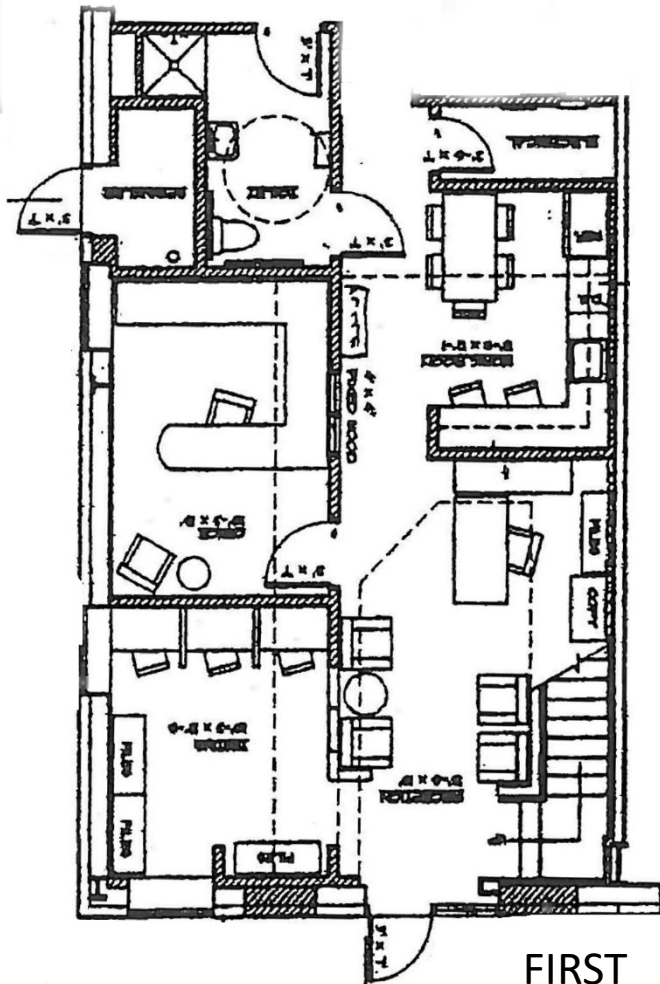
**COMMERCIAL  
PROPERTIES, INC**  
**(505) 216-1500**

**2019 GALISTEO ST. SUITE L-1 SANTA FE, NM 87505**

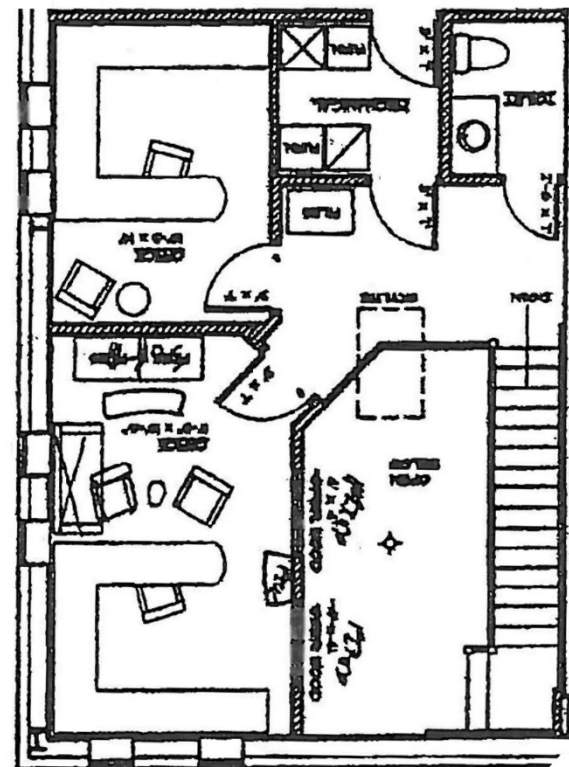
INFORMATION ENCLOSED IS DEEMED TO BE FROM RELIABLE SOURCES, HOWEVER, IT IS SUBJECT TO CHANGE, WITHDRAWAL FROM THE MARKET AND INDEPENDENT VERIFICATION BY PROSPECTIVE BUYER OR LESSEE, AS A PART OF THEIR DUE DILIGENCE IN DETERMINING THE FEASIBILITY AND ACCURACY OF INFORMATION OF THE PROPERTY FOR THEIR USE.

**www.CPI-NM.com**

**JAMES WHEELER, CCIM**  
**(505) 470-8081 (CELL)**  
**LICENSE # 18725**



FIRST



SECOND

COMMERCIAL  
PROPERTIES, INC  
(505) 216-1500

2019 GALISTEO ST. SUITE L-1 SANTA FE, NM 87505

INFORMATION ENCLOSED IS DEEMED TO BE FROM RELIABLE SOURCES, HOWEVER, IT IS SUBJECT TO CHANGE, WITHDRAWAL FROM THE MARKET AND INDEPENDENT VERIFICATION BY PROSPECTIVE BUYER OR LESSEE, AS A PART OF THEIR DUE DILIGENCE IN DETERMINING THE FEASIBILITY AND ACCURACY OF INFORMATION OF THE PROPERTY FOR THEIR USE.

[www.CPI-NM.com](http://www.CPI-NM.com)

JAMES WHEELER, CCIM  
(505) 470-8081 (CELL)  
LICENSE # 18725





**COMMERCIAL  
PROPERTIES, INC**  
**(505) 216-1500**

**2019 GALISTEO ST. SUITE L-1 SANTA FE, NM 87505**

INFORMATION ENCLOSED IS DEEMED TO BE FROM RELIABLE SOURCES, HOWEVER, IT IS SUBJECT TO CHANGE, WITHDRAWAL FROM THE MARKET AND INDEPENDENT VERIFICATION BY PROSPECTIVE BUYER OR LESSEE, AS A PART OF THEIR DUE DILIGENCE IN DETERMINING THE FEASIBILITY AND ACCURACY OF INFORMATION OF THE PROPERTY FOR THEIR USE.

**[www.CPI-NM.com](http://www.CPI-NM.com)**

**JAMES WHEELER, CCIM**  
**(505) 470-8081 (CELL)**  
**LICENSE # 18725**



**COMMERCIAL  
PROPERTIES, INC**  
**(505) 216-1500**

**2019 GALISTEO ST. SUITE L-1 SANTA FE, NM 87505**

INFORMATION ENCLOSED IS DEEMED TO BE FROM RELIABLE SOURCES, HOWEVER, IT IS SUBJECT TO CHANGE, WITHDRAWAL FROM THE MARKET AND INDEPENDENT VERIFICATION BY PROSPECTIVE BUYER OR LESSEE, AS A PART OF THEIR DUE DILIGENCE IN DETERMINING THE FEASIBILITY AND ACCURACY OF INFORMATION OF THE PROPERTY FOR THEIR USE.

**[www.CPI-NM.com](http://www.CPI-NM.com)**

**JAMES WHEELER, CCIM**  
**(505) 470-8081 (CELL)**  
**LICENSE # 18725**