

MEDICAL OFFICE WITH LOTS TO OFFER!

CONVENIENT TO ST. VINCENT'S HOSPITAL



530-A Harkle Road

Santa Fe, NM 87505

SALE PRICE

\$499,000

INTERIOR AREA

± 2,214 SF

Great Condition

Free-standing Condo

Low Condo Fees

- Large Waiting/Reception Area
- Reception Desk
- Records Room
- (5) Exam Rooms with Sinks
- Lab w/ Nurse's Station
- Large Staff/Meeting Room
- Office Manager Office
- Staff Lounge
- (2) Restrooms
- Hot Water Radiant Heat
- Air Conditioning
- Washer/Dryer included
- 10% Down
- 0% Down for Doctors
- 4% Fixed, 25 years

CALL TODAY!!

**COMMERCIAL
PROPERTIES, INC**
(505) 216-1500

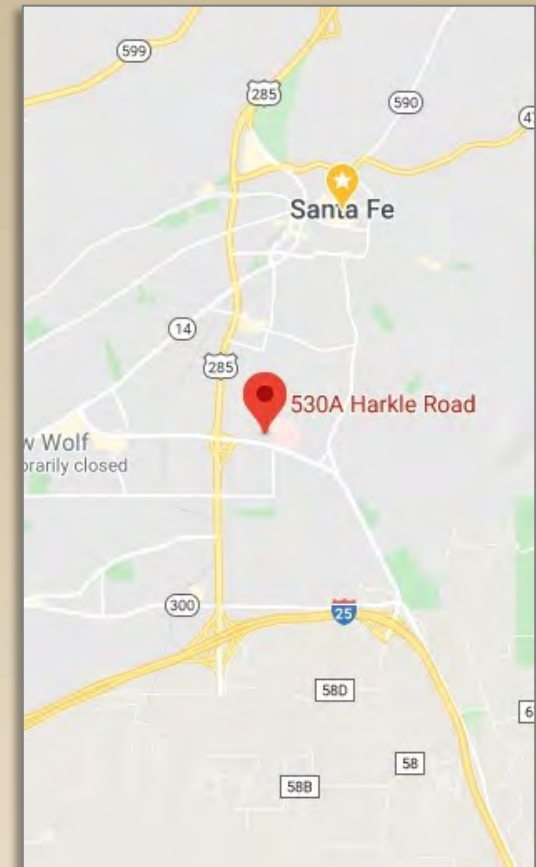
2019 GALISTEO ST. SUITE L-1 SANTA FE, NM 87505

INFORMATION ENCLOSED IS DEEMED TO BE FROM RELIABLE SOURCES, HOWEVER, IT IS SUBJECT TO CHANGE, WITHDRAWAL FROM THE MARKET AND INDEPENDENT VERIFICATION BY PROSPECTIVE BUYER OR LESSEE, AS A PART OF THEIR DUE DILIGENCE IN DETERMINING THE FEASIBILITY AND ACCURACY OF INFORMATION OF THE PROPERTY FOR THEIR USE.

www.CPI-NM.com

JAMES WHEELER, CCIM
(505) 470-8081 (CELL)
LICENSE # 18725

SITE PLAN & MAP



**COMMERCIAL
PROPERTIES, INC**
(505) 216-1500

2019 GALISTEO ST. SUITE L-1 SANTA FE, NM 87505

INFORMATION ENCLOSED IS DEEMED TO BE FROM RELIABLE SOURCES, HOWEVER, IT IS SUBJECT TO CHANGE, WITHDRAWAL FROM THE MARKET AND INDEPENDENT VERIFICATION BY PROSPECTIVE BUYER OR LESSEE, AS A PART OF THEIR DUE DILIGENCE IN DETERMINING THE FEASIBILITY AND ACCURACY OF INFORMATION OF THE PROPERTY FOR THEIR USE.

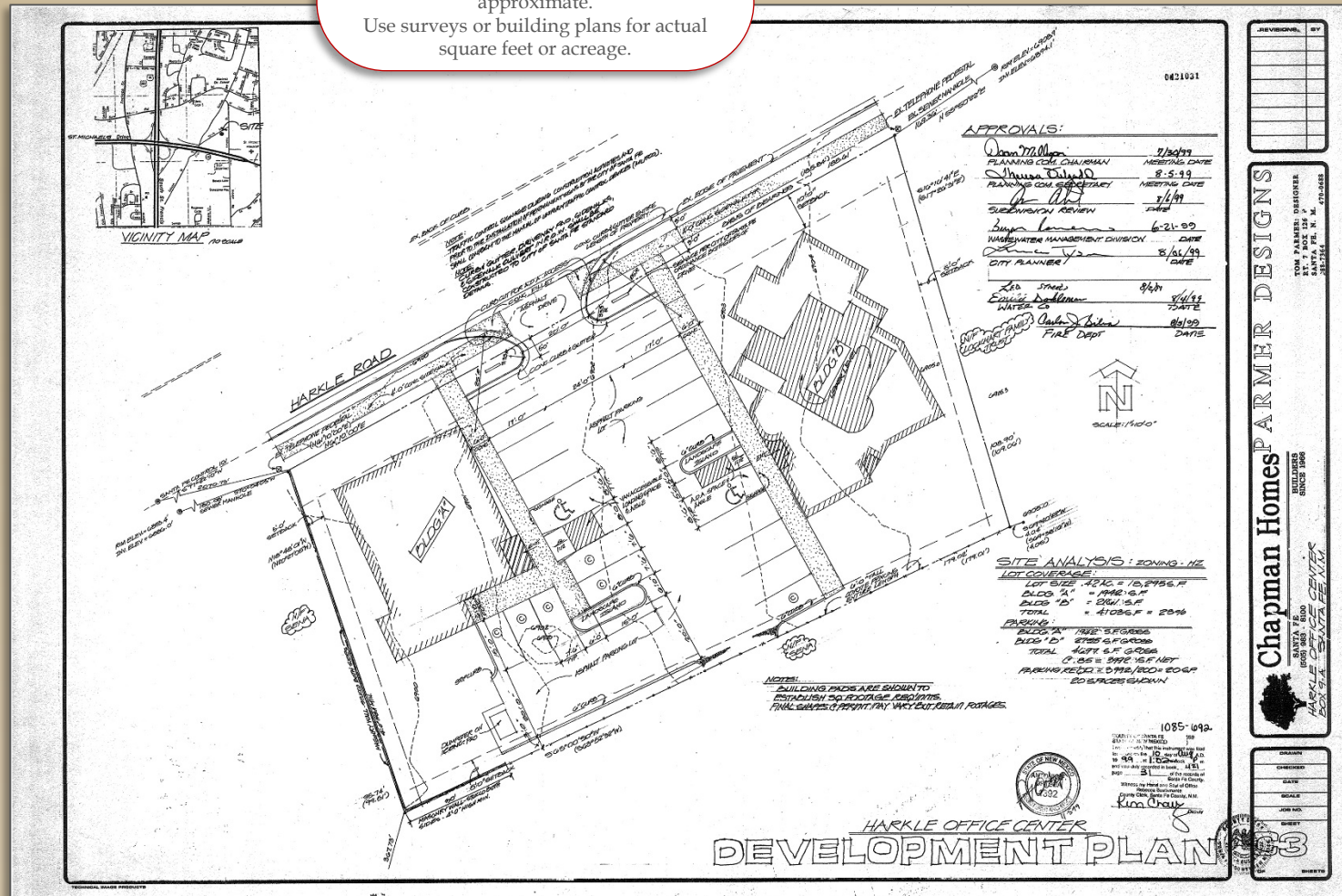
www.CPI-NM.com

JAMES WHEELER, CCIM
(505) 470-8081 (CELL)
LICENSE # 18725

This image is for Visual Use Only

Measurements and acreage are approximate.

Use surveys or building plans for actual square feet or acreage.



COMMERCIAL
PROPERTIES, INC
(505) 216-1500

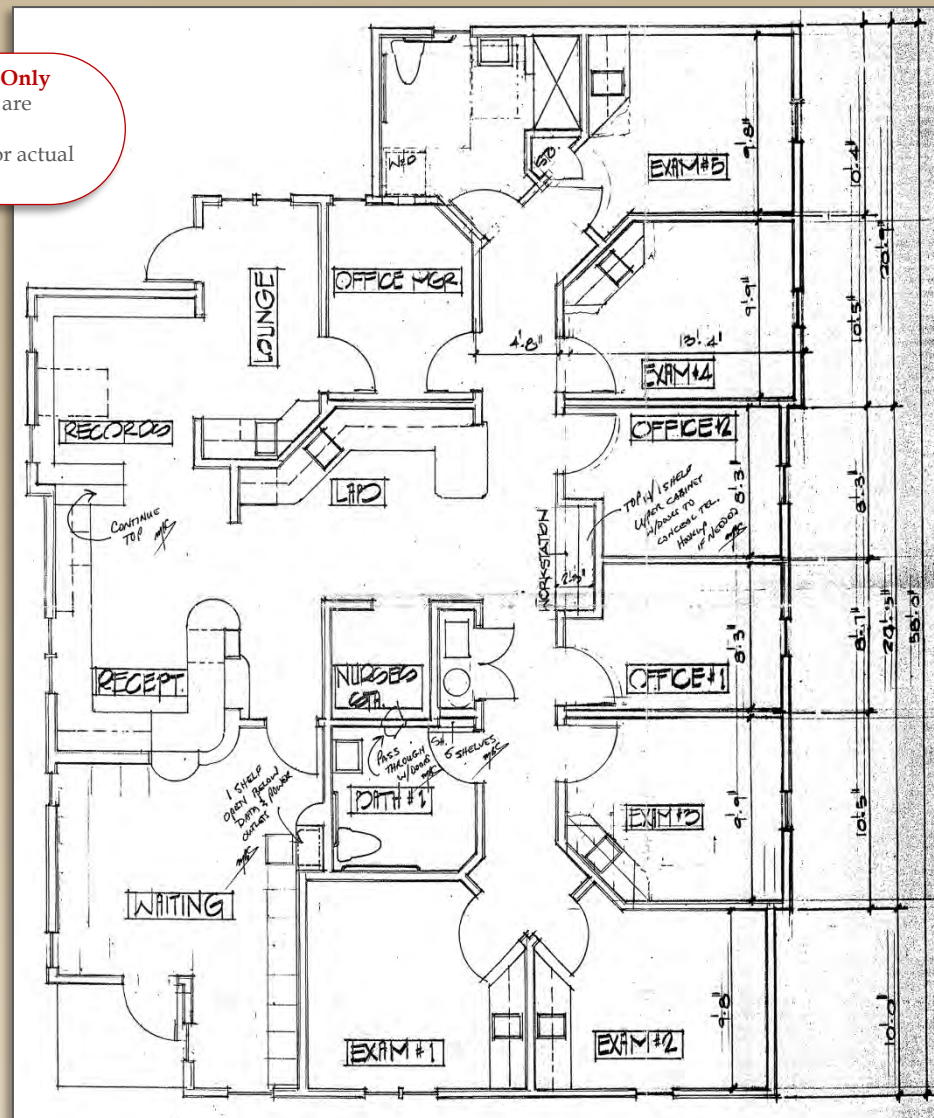
2019 GALISTEO ST. SUITE L-1 SANTA FE, NM 87505

INFORMATION ENCLOSED IS DEEMED TO BE FROM RELIABLE SOURCES, HOWEVER, IT IS SUBJECT TO CHANGE, WITHDRAWAL FROM THE MARKET AND INDEPENDENT VERIFICATION BY PROSPECTIVE BUYER OR LESSEE, AS A PART OF THEIR DUE DILIGENCE IN DETERMINING THE FEASIBILITY AND ACCURACY OF INFORMATION OF THE PROPERTY FOR THEIR USE.

WWW.CPI-NM.COM

JAMES WHEELER, CCIM
(505) 470-8081 (CELL)
LICENSE # 18725

Use surveys or building plans for actual square feet or acreage.



JAMES WHEELER, CCIM
(505) 470-8081 (CELL)
LICENSE # 18725



**COMMERCIAL
PROPERTIES, INC**
(505) 216-1500

2019 GALISTEO ST. SUITE L-1 SANTA FE, NM 87505

INFORMATION ENCLOSED IS DEEMED TO BE FROM RELIABLE SOURCES, HOWEVER, IT IS SUBJECT TO CHANGE, WITHDRAWAL FROM THE MARKET AND INDEPENDENT VERIFICATION BY PROSPECTIVE BUYER OR LESSEE, AS A PART OF THEIR DUE DILIGENCE IN DETERMINING THE FEASIBILITY AND ACCURACY OF INFORMATION OF THE PROPERTY FOR THEIR USE.

www.CPI-NM.com

JAMES WHEELER, CCIM
(505) 470-8081 (CELL)
LICENSE # 18725

RECEPTION WAIT AREA & WINDOW



**COMMERCIAL
PROPERTIES, INC**
(505) 216-1500

2019 GALISTEO ST. SUITE L-1 SANTA FE, NM 87505

INFORMATION ENCLOSED IS DEEMED TO BE FROM RELIABLE SOURCES, HOWEVER, IT IS SUBJECT TO CHANGE, WITHDRAWAL FROM THE MARKET AND INDEPENDENT VERIFICATION BY PROSPECTIVE BUYER OR LESSEE, AS A PART OF THEIR DUE DILIGENCE IN DETERMINING THE FEASIBILITY AND ACCURACY OF INFORMATION OF THE PROPERTY FOR THEIR USE.

www.CPI-NM.com

JAMES WHEELER, CCIM
(505) 470-8081 (CELL)
LICENSE # 18725

RECEPTION DESK & FILE ROOM



**COMMERCIAL
PROPERTIES, INC**
(505) 216-1500

2019 GALISTEO ST. SUITE L-1 SANTA FE, NM 87505

INFORMATION ENCLOSED IS DEEMED TO BE FROM RELIABLE SOURCES, HOWEVER, IT IS SUBJECT TO CHANGE, WITHDRAWAL FROM THE MARKET AND INDEPENDENT VERIFICATION BY PROSPECTIVE BUYER OR LESSEE, AS A PART OF THEIR DUE DILIGENCE IN DETERMINING THE FEASIBILITY AND ACCURACY OF INFORMATION OF THE PROPERTY FOR THEIR USE.

www.CPI-NM.com

JAMES WHEELER, CCIM
(505) 470-8081 (CELL)
LICENSE # 18725

BUSINESS OFFICE & RECORDS STORAGE



**COMMERCIAL
PROPERTIES, INC**
(505) 216-1500

2019 GALISTEO ST. SUITE L-1 SANTA FE, NM 87505

INFORMATION ENCLOSED IS DEEMED TO BE FROM RELIABLE SOURCES, HOWEVER, IT IS SUBJECT TO CHANGE, WITHDRAWAL FROM THE MARKET AND INDEPENDENT VERIFICATION BY PROSPECTIVE BUYER OR LESSEE, AS A PART OF THEIR DUE DILIGENCE IN DETERMINING THE FEASIBILITY AND ACCURACY OF INFORMATION OF THE PROPERTY FOR THEIR USE.

www.CPI-NM.com

JAMES WHEELER, CCIM
(505) 470-8081 (CELL)
LICENSE # 18725

EXAM ROOMS 1 & 2



**COMMERCIAL
PROPERTIES, INC**
(505) 216-1500

2019 GALISTEO ST. SUITE L-1 SANTA FE, NM 87505

INFORMATION ENCLOSED IS DEEMED TO BE FROM RELIABLE SOURCES, HOWEVER, IT IS SUBJECT TO CHANGE, WITHDRAWAL FROM THE MARKET AND INDEPENDENT VERIFICATION BY PROSPECTIVE BUYER OR LESSEE, AS A PART OF THEIR DUE DILIGENCE IN DETERMINING THE FEASIBILITY AND ACCURACY OF INFORMATION OF THE PROPERTY FOR THEIR USE.

www.CPI-NM.com

JAMES WHEELER, CCIM
(505) 470-8081 (CELL)
LICENSE # 18725

EXAM ROOMS 4 & 5



**COMMERCIAL
PROPERTIES, INC**
(505) 216-1500

2019 GALISTEO ST. SUITE L-1 SANTA FE, NM 87505

INFORMATION ENCLOSED IS DEEMED TO BE FROM RELIABLE SOURCES, HOWEVER, IT IS SUBJECT TO CHANGE, WITHDRAWAL FROM THE MARKET AND INDEPENDENT VERIFICATION BY PROSPECTIVE BUYER OR LESSEE, AS A PART OF THEIR DUE DILIGENCE IN DETERMINING THE FEASIBILITY AND ACCURACY OF INFORMATION OF THE PROPERTY FOR THEIR USE.

www.CPI-NM.com

JAMES WHEELER, CCIM
(505) 470-8081 (CELL)
LICENSE # 18725



**COMMERCIAL
PROPERTIES, INC**
(505) 216-1500

2019 GALISTEO ST. SUITE L-1 SANTA FE, NM 87505

INFORMATION ENCLOSED IS DEEMED TO BE FROM RELIABLE SOURCES, HOWEVER, IT IS SUBJECT TO CHANGE, WITHDRAWAL FROM THE MARKET AND INDEPENDENT VERIFICATION BY PROSPECTIVE BUYER OR LESSEE, AS A PART OF THEIR DUE DILIGENCE IN DETERMINING THE FEASIBILITY AND ACCURACY OF INFORMATION OF THE PROPERTY FOR THEIR USE.

www.CPI-NM.com

JAMES WHEELER, CCIM
(505) 470-8081 (CELL)
LICENSE # 18725

NURSE STATION & PASS THROUGH



**COMMERCIAL
PROPERTIES, INC**
(505) 216-1500

2019 GALISTEO ST. SUITE L-1 SANTA FE, NM 87505

INFORMATION ENCLOSED IS DEEMED TO BE FROM RELIABLE SOURCES, HOWEVER, IT IS SUBJECT TO CHANGE, WITHDRAWAL FROM THE MARKET AND INDEPENDENT VERIFICATION BY PROSPECTIVE BUYER OR LESSEE, AS A PART OF THEIR DUE DILIGENCE IN DETERMINING THE FEASIBILITY AND ACCURACY OF INFORMATION OF THE PROPERTY FOR THEIR USE.

www.CPI-NM.com

JAMES WHEELER, CCIM
(505) 470-8081 (CELL)
LICENSE # 18725



**COMMERCIAL
PROPERTIES, INC**
(505) 216-1500

2019 GALISTEO ST. SUITE L-1 SANTA FE, NM 87505

INFORMATION ENCLOSED IS DEEMED TO BE FROM RELIABLE SOURCES, HOWEVER, IT IS SUBJECT TO CHANGE, WITHDRAWAL FROM THE MARKET AND INDEPENDENT VERIFICATION BY PROSPECTIVE BUYER OR LESSEE, AS A PART OF THEIR DUE DILIGENCE IN DETERMINING THE FEASIBILITY AND ACCURACY OF INFORMATION OF THE PROPERTY FOR THEIR USE.

www.CPI-NM.com

JAMES WHEELER, CCIM
(505) 470-8081 (CELL)
LICENSE # 18725



**COMMERCIAL
PROPERTIES, INC**
(505) 216-1500

2019 GALISTEO ST. SUITE L-1 SANTA FE, NM 87505

INFORMATION ENCLOSED IS DEEMED TO BE FROM RELIABLE SOURCES, HOWEVER, IT IS SUBJECT TO CHANGE, WITHDRAWAL FROM THE MARKET AND INDEPENDENT VERIFICATION BY PROSPECTIVE BUYER OR LESSEE, AS A PART OF THEIR DUE DILIGENCE IN DETERMINING THE FEASIBILITY AND ACCURACY OF INFORMATION OF THE PROPERTY FOR THEIR USE.

www.CPI-NM.com

JAMES WHEELER, CCIM
(505) 470-8081 (CELL)
LICENSE # 18725