

SECURE, IN-TOWN INDUSTRIAL WAREHOUSE

CENTRALLY LOCATED



1242 Siler Road
Units 9, 10

Santa Fe, NM 87507

FOR

LEASE RATE

\$850/month

\$10.20/SF/mo. Modified Gross

AVAILABLE AREA

± 2,000 SF Total

BUILDING C

Unit 9: ± 1,000 SF

Unit 10: ± 1,000 SF

ZONING

I-2

FEATURES

- Flexible demising walls
- Building C has available yard space
- Common parking / Gated entrance
- One overhead door per unit (±1,000 SF)
- Outside storage available
- Tenant improvements available depending on terms
- No common area maintenance cost

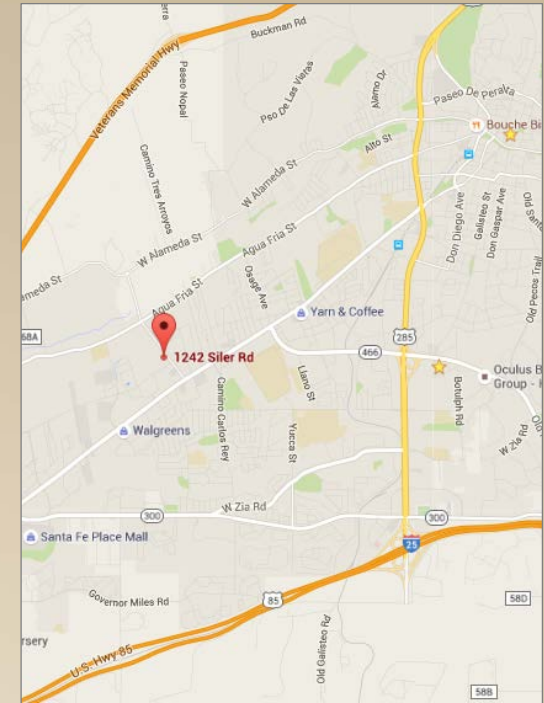
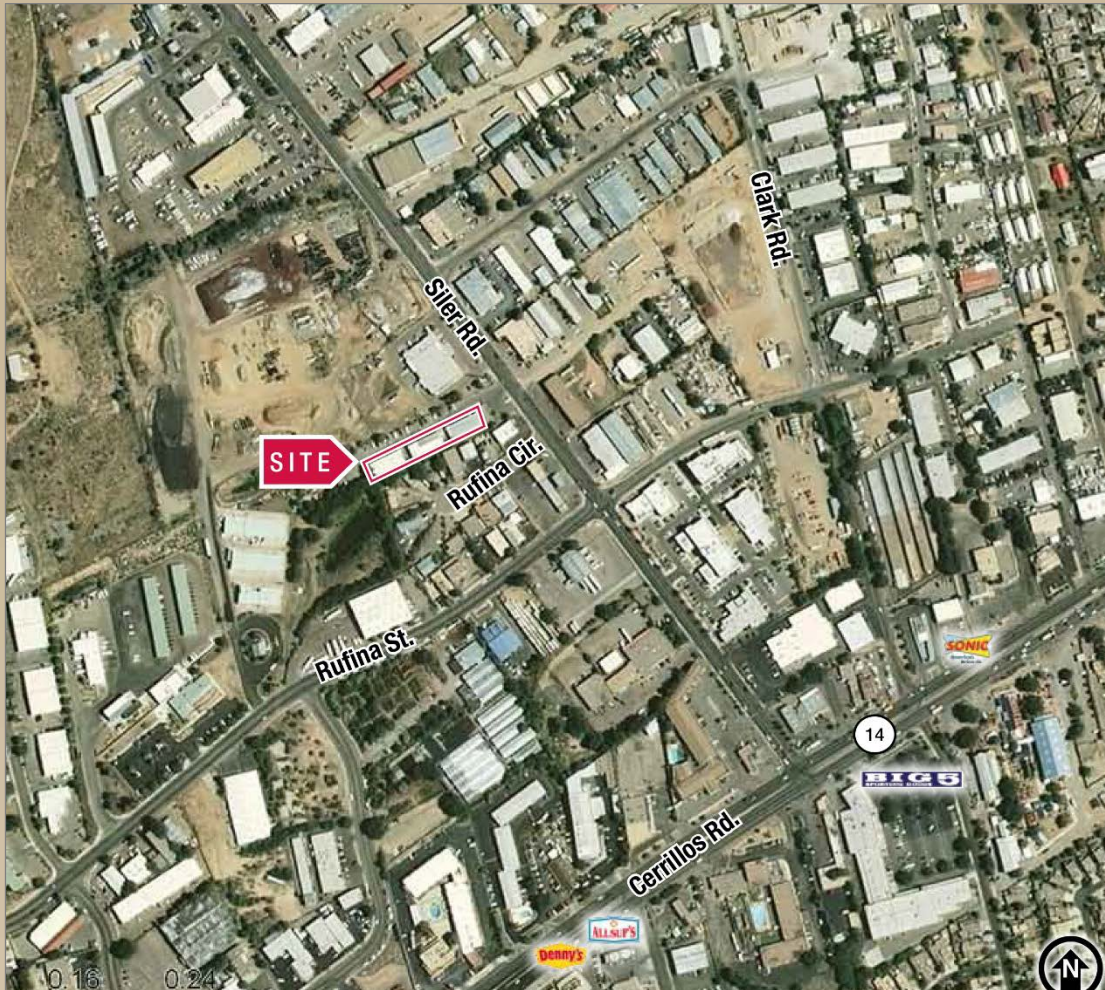
COMMERCIAL
PROPERTIES, INC
(505) 216-1500

2019 GALISTEO ST. SUITE L-1 SANTA FE, NM 87505

INFORMATION ENCLOSED IS DEEMED TO BE FROM RELIABLE SOURCES, HOWEVER, IT IS SUBJECT TO CHANGE, WITHDRAWAL FROM THE MARKET AND INDEPENDENT VERIFICATION BY PROSPECTIVE BUYER OR LESSEE, AS A PART OF THEIR DUE DILIGENCE IN DETERMINING THE FEASIBILITY AND ACCURACY OF INFORMATION OF THE PROPERTY FOR THEIR USE.

www.CPI-NM.com

GEORGE JIMENEZ
(505) 470-3346 (CELL)
LICENSE # 18801

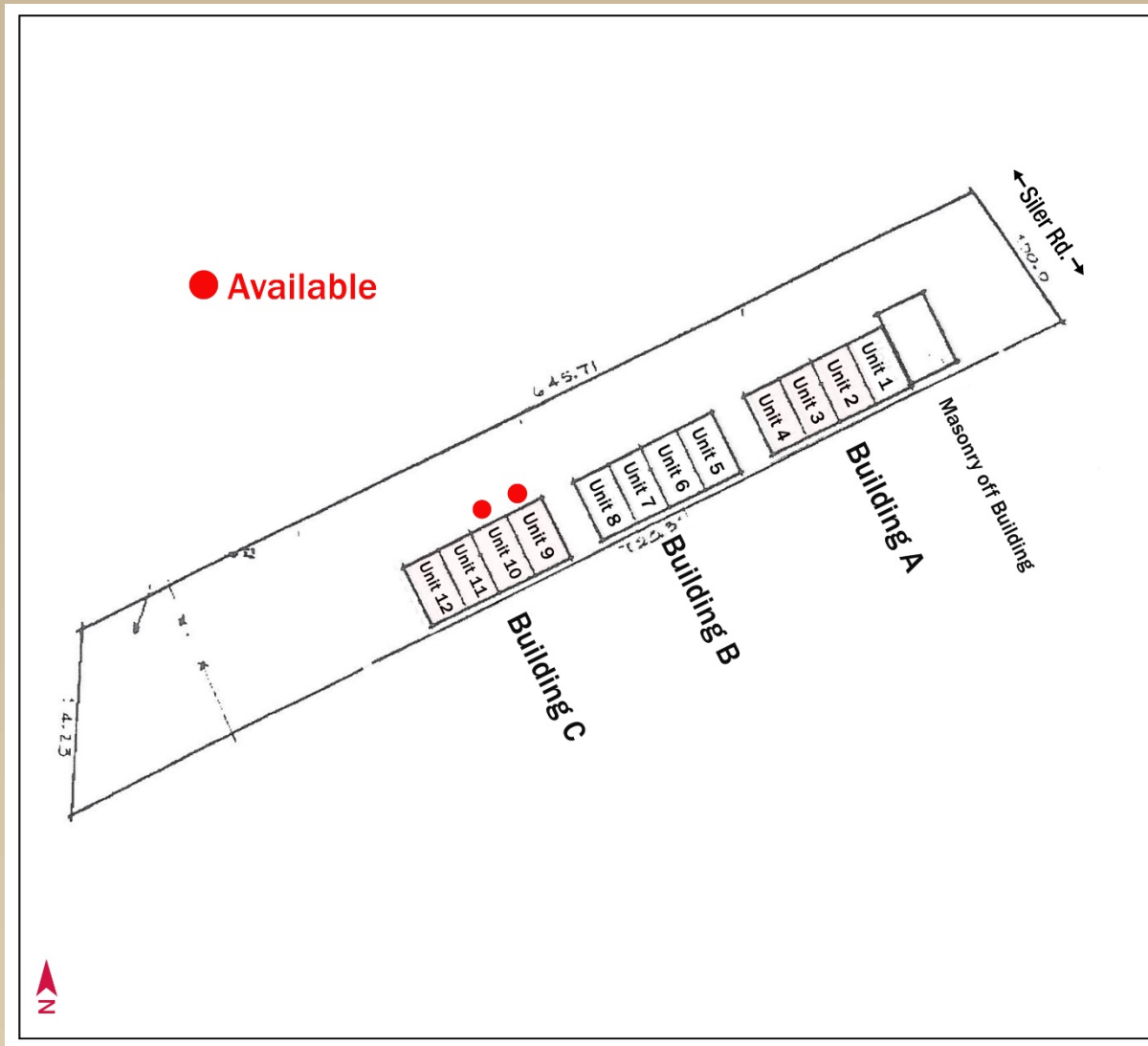


**COMMERCIAL
PROPERTIES, INC**
(505) 216-1500

2019 GALISTEO ST. SUITE L-1 SANTA FE, NM 87505
INFORMATION ENCLOSED IS DEEMED TO BE FROM RELIABLE SOURCES, HOWEVER, IT IS SUBJECT TO CHANGE, WITHDRAWAL FROM THE MARKET AND INDEPENDENT VERIFICATION BY PROSPECTIVE BUYER OR LESSEE, AS A PART OF THEIR DUE DILIGENCE IN DETERMINING THE FEASIBILITY AND ACCURACY OF INFORMATION OF THE PROPERTY FOR THEIR USE.

www.CPI-NM.com

GEORGE JIMENEZ
(505) 470-3346 (CELL)
LICENSE # 18801



**COMMERCIAL
PROPERTIES, INC**
(505) 216-1500

2019 GALISTEO ST. SUITE L-1 SANTA FE, NM 87505

INFORMATION ENCLOSED IS DEEMED TO BE FROM RELIABLE SOURCES, HOWEVER, IT IS SUBJECT TO CHANGE, WITHDRAWAL FROM THE MARKET AND INDEPENDENT VERIFICATION BY PROSPECTIVE BUYER OR LESSEE, AS A PART OF THEIR DUE DILIGENCE IN DETERMINING THE FEASIBILITY AND ACCURACY OF INFORMATION OF THE PROPERTY FOR THEIR USE.

www.CPI-NM.com

GEORGE JIMENEZ
(505) 470-3346 (CELL)
LICENSE # 18801



**COMMERCIAL
PROPERTIES, INC**
(505) 216-1500

2019 GALISTEO ST. SUITE L-1 SANTA FE, NM 87505

INFORMATION ENCLOSED IS DEEMED TO BE FROM RELIABLE SOURCES, HOWEVER, IT IS SUBJECT TO CHANGE, WITHDRAWAL FROM THE MARKET AND INDEPENDENT VERIFICATION BY PROSPECTIVE BUYER OR LESSEE, AS A PART OF THEIR DUE DILIGENCE IN DETERMINING THE FEASIBILITY AND ACCURACY OF INFORMATION OF THE PROPERTY FOR THEIR USE.

www.CPI-NM.com

GEORGE JIMENEZ
(505) 470-3346 (CELL)
LICENSE # 18801

	1 mile	3 miles	5 miles
Population			
1990 Population	8,538	45,459	65,320
2000 Population	9,157	51,728	79,208
2010 Population	10,124	55,548	90,650
2015 Population	10,506	57,196	95,179
1990-2000 Annual Rate	0.70%	1.30%	1.95%
2000-2010 Annual Rate	0.98%	0.70%	1.33%
2010-2015 Annual Rate	0.74%	0.59%	0.98%
2010 Male Population	49.6%	48.8%	48.5%
2010 Female Population	50.4%	51.2%	51.5%
2010 Median Age	37.1	38.5	39.6
In the identified area, the current year population is 90,650. In 2000, the Census count in the area was 79,208. The rate of change since 2000 was 1.33 percent annually. The five-year projection for the population in the area is 95,179, representing a change of 0.98 percent annually from 2010 to 2015. Currently, the population is 48.5 percent male and 51.5 percent female.			
Population by Employment			
Currently, 92.1 percent of the civilian labor force in the identified area is employed and 7.9 percent are unemployed. In comparison, 89.2 percent of the U.S. civilian labor force is employed, and 10.8 percent are unemployed. In five years the rate of employment in the area will be 92.8 percent of the civilian labor force, and unemployment will be 7.2 percent. The percentage of the U.S. civilian labor force that will be employed in five years is 91.2 percent, and 8.8 percent will be unemployed. In 2000, 67.5 percent of the population aged 16 years or older in the area participated in the labor force, and 0.1 percent were in the Armed Forces.			
In the current year, the occupational distribution of the employed population is:			
66.9 percent in white collar jobs (compared to 61.6 percent of the U.S. employment)			
19.8 percent in service jobs (compared to 17.3 percent of U.S. employment)			
13.3 percent in blue collar jobs (compared to 21.1 percent of U.S. employment)			
In 2000, 72.1 percent of the area population drove alone to work, and 6.9 percent worked at home. The average travel time to work in 2000 was 18.5 minutes in the area, compared to the U.S. average of 25.5 minutes.			
Population by Education			
In the current year, the educational attainment of the population aged 25 years or older in the area was distributed as follows:			
13.6 percent had not earned a high school diploma (14.8 percent in the U.S.)			
19.5 percent were high school graduates only (29.6 percent in the U.S.)			
6.9 percent had completed an Associate degree (7.7 percent in the U.S.)			
21.0 percent had a Bachelor's degree (17.7 percent in the U.S.)			
18.1 percent had earned a Master's/Professional/Doctorate Degree (10.4 percent in the U.S.)			
Per Capita Income			
1990 Per Capita Income	\$11,575	\$13,250	\$15,571
2000 Per Capita Income	\$18,307	\$20,751	\$23,627
2010 Per Capita Income	\$23,880	\$26,657	\$29,809
2015 Per Capita Income	\$26,279	\$29,459	\$32,605
1990-2000 Annual Rate	4.69%	4.59%	4.26%
2000-2010 Annual Rate	2.63%	2.47%	2.29%
2010-2015 Annual Rate	1.93%	2.02%	1.81%
Households			
1990 Households	2,956	17,105	26,025
2000 Households	3,456	21,146	33,340
2010 Total Households	3,774	22,524	37,504
2015 Total Households	3,916	23,197	39,267
1990-2000 Annual Rate	1.58%	2.14%	2.51%
2000-2010 Annual Rate	0.86%	0.62%	1.16%
2010-2015 Annual Rate	0.74%	0.59%	0.92%
2010 Average Household Size	2.57	2.41	2.37
The household count in this area has changed from 33,340 in 2000 to 37,504 in the current year, a change of 1.16 percent annually. The five-year projection of households is 39,267, a change of 0.92 percent annually from the current year total. Average household size is currently 2.37, compared to 2.33 in the year 2000. The number of families in the current year is 20,901 in the specified area.			

**COMMERCIAL
PROPERTIES, INC**
(505) 216-1500

2019 GALISTEO ST. SUITE L-1 SANTA FE, NM 87505

INFORMATION ENCLOSED IS DEEMED TO BE FROM RELIABLE SOURCES, HOWEVER, IT IS SUBJECT TO CHANGE, WITHDRAWAL FROM THE MARKET AND INDEPENDENT VERIFICATION BY PROSPECTIVE BUYER OR LESSEE, AS A PART OF THEIR DUE DILIGENCE IN DETERMINING THE FEASIBILITY AND ACCURACY OF INFORMATION OF THE PROPERTY FOR THEIR USE.

WWW.CPI-NM.COM

GEORGE JIMENEZ
(505) 470-3346 (CELL)
LICENSE # 18801

	1 mile	3 miles	5 miles
Households by Income			
Current median household income is \$53,188 in the area, compared to \$54,442 for all U.S. households. Median household income is projected to be \$57,846 in five years. In 2000, median household income was \$39,943, compared to \$29,242 in 1990.			
Current average household income is \$71,086 in this area, compared to \$70,173 for all U.S. households. Average household income is projected to be \$77,995 in five years. In 2000, average household income was \$55,369, compared to \$38,737 in 1990.			
Current per capita income is \$29,809 in the area, compared to the U.S. per capita income of \$26,739. The per capita income is projected to be \$32,605 in five years. In 2000, the per capita income was \$23,627, compared to \$15,571 in 1990.			
Median Household Income			
1990 Median Household Income	\$26,889	\$28,839	\$29,242
2000 Median Household Income	\$36,445	\$38,705	\$39,943
2010 Median Household Income	\$46,762	\$50,667	\$53,188
2015 Median Household Income	\$50,066	\$55,249	\$57,846
1990-2000 Annual Rate	3.09%	2.99%	3.17%
2000-2010 Annual Rate	2.46%	2.66%	2.83%
2010-2015 Annual Rate	1.38%	1.75%	1.69%
Average Household Income			
1990 Average Household Income	\$31,525	\$34,568	\$38,737
2000 Average Household Income	\$47,032	\$50,540	\$55,369
2010 Average Household Income	\$60,165	\$64,778	\$71,086
2015 Average Household Income	\$66,202	\$71,565	\$77,995
1990-2000 Annual Rate	4.08%	3.87%	3.64%
2000-2010 Annual Rate	2.43%	2.45%	2.47%
2010-2015 Annual Rate	1.93%	2.01%	1.87%
2010 Housing			
1990 Total Housing Units	3,140	17,896	28,112
2000 Total Housing Units	3,766	22,352	36,544
2010 Total Housing Units	4,226	24,468	42,328
2015 Total Housing Units	4,425	25,427	44,755
1990 Owner Occupied Housing Units	2,058	10,828	16,120
1990 Renter Occupied Housing Units	897	6,277	9,904
1990 Vacant Housing Units	137	817	2,080
2000 Owner Occupied Housing Units	2,299	12,759	20,437
2000 Renter Occupied Housing Units	1,157	8,387	12,903
2000 Vacant Housing Units	249	1,224	3,192
2010 Owner Occupied Housing Units	2,444	13,366	22,812
2010 Renter Occupied Housing Units	1,330	9,157	14,693
2010 Vacant Housing Units	452	1,944	4,824
2015 Owner Occupied Housing Units	2,484	13,742	23,884
2015 Renter Occupied Housing Units	1,431	9,454	15,383
2015 Vacant Housing Units	509	2,230	5,488
Currently, 53.9 percent of the 42,328 housing units in the area are owner occupied; 34.7 percent, renter occupied; and 11.4 are vacant. In 2000, there were 36,544 housing units - 55.9 percent owner occupied, 35.3 percent renter occupied, and 8.7 percent vacant. The rate of change in housing units since 2000 is 1.44 percent. Median home value in the area is \$269,094, compared to a median home value of \$157,913 for the U.S. In five years, median value is projected to change by 5.43 percent annually to \$350,550. From 2000 to the current year, median home value change by 4.82 percent annually.			

**COMMERCIAL
PROPERTIES, INC**
(505) 216-1500

2019 GALISTEO ST. SUITE L-1 SANTA FE, NM 87505

INFORMATION ENCLOSED IS DEEMED TO BE FROM RELIABLE SOURCES, HOWEVER, IT IS SUBJECT TO CHANGE, WITHDRAWAL FROM THE MARKET AND INDEPENDENT VERIFICATION BY PROSPECTIVE BUYER OR LESSEE, AS A PART OF THEIR DUE DILIGENCE IN DETERMINING THE FEASIBILITY AND ACCURACY OF INFORMATION OF THE PROPERTY FOR THEIR USE.

WWW.CPI-NM.COM

GEORGE JIMENEZ
(505) 470-3346 (CELL)
LICENSE # 18801