

EL MERCADO SHOPPING CENTER

GREAT SHOWROOM/RETAIL SPACE



527 Cordova Road
Unit B

Santa Fe, NM 87505

BOOR

LEASE RATE
\$1,487.50/month
+ \$397 CAM

BUILDING AREA
± 1,190 SF

ZONING
Shopping Center

- FEATURES**
- Was the Running Hub
 - Immediate Occupancy
 - Great showroom/retail space
 - High Occupancy Center
 - Fronts Cordova Road
 - Great Visibility
 - CVS pharmacy anchor
 - Lots of Parking

COMMERCIAL
PROPERTIES, INC
(505) 216-1500

2019 GALISTEO ST. SUITE L-1 SANTA FE, NM 87505

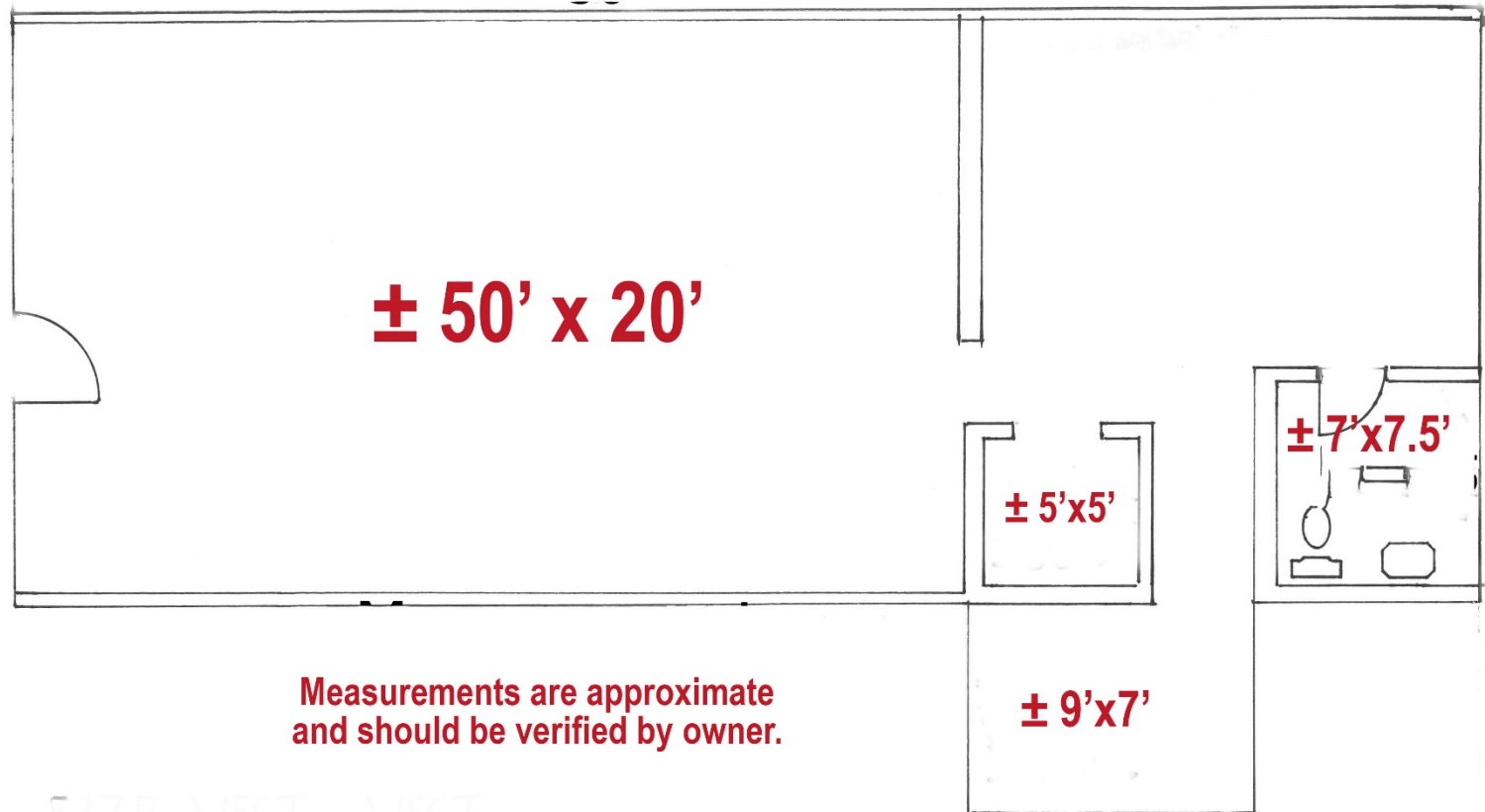
INFORMATION ENCLOSED IS DEEMED TO BE FROM RELIABLE SOURCES, HOWEVER, IT IS SUBJECT TO CHANGE, WITHDRAWAL FROM THE MARKET AND INDEPENDENT VERIFICATION BY PROSPECTIVE BUYER OR LESSEE, AS A PART OF THEIR DUE DILIGENCE IN DETERMINING THE FEASIBILITY AND ACCURACY OF INFORMATION OF THE PROPERTY FOR THEIR USE.

WWW.CPI-NM.COM

MIKE BOYLE
(505) 269-6463 (CELL)
LICENSE #47579

JAMES WHEELER, CCIM
(505) 470-8081 (CELL)
LICENSE #18725

JAMES WHEELER, CCIM
(505) 470-8081 (CELL)
LICENSE #18725



Measurements are approximate
and should be verified by owner.

5278 WEST WEST

**COMMERCIAL
PROPERTIES, INC**
(505) 216-1500

2019 GALISTEO ST. SUITE L-1 SANTA FE, NM 87505

INFORMATION ENCLOSED IS DEEMED TO BE FROM RELIABLE SOURCES, HOWEVER, IT IS SUBJECT TO CHANGE, WITHDRAWAL FROM THE MARKET AND INDEPENDENT VERIFICATION BY PROSPECTIVE BUYER OR LESSEE, AS A PART OF THEIR DUE DILIGENCE IN DETERMINING THE FEASIBILITY AND ACCURACY OF INFORMATION OF THE PROPERTY FOR THEIR USE.

www.CPI-NM.com

MIKE BOYLE
(505) 269-6463 (CELL)
LICENSE #47579

JAMES WHEELER, CCIM
(505) 470-8081 (CELL)
LICENSE #18725



**COMMERCIAL
PROPERTIES, INC**
(505) 216-1500

2019 GALISTEO ST. SUITE L-1 SANTA FE, NM 87505

INFORMATION ENCLOSED IS DEEMED TO BE FROM RELIABLE SOURCES, HOWEVER, IT IS SUBJECT TO CHANGE, WITHDRAWAL FROM THE MARKET AND INDEPENDENT VERIFICATION BY PROSPECTIVE BUYER OR LESSEE, AS A PART OF THEIR DUE DILIGENCE IN DETERMINING THE FEASIBILITY AND ACCURACY OF INFORMATION OF THE PROPERTY FOR THEIR USE.

www.CPI-NM.com

MIKE BOYLE
(505) 269-6463 (CELL)
LICENSE #47579

JAMES WHEELER, CCIM
(505) 470-8081 (CELL)
LICENSE #18725



**COMMERCIAL
PROPERTIES, INC**
(505) 216-1500

2019 GALISTEO ST. SUITE L-1 SANTA FE, NM 87505

INFORMATION ENCLOSED IS DEEMED TO BE FROM RELIABLE SOURCES, HOWEVER, IT IS SUBJECT TO CHANGE, WITHDRAWAL FROM THE MARKET AND INDEPENDENT VERIFICATION BY PROSPECTIVE BUYER OR LESSEE, AS A PART OF THEIR DUE DILIGENCE IN DETERMINING THE FEASIBILITY AND ACCURACY OF INFORMATION OF THE PROPERTY FOR THEIR USE.

www.CPI-NM.com

MIKE BOYLE
(505) 269-6463 (CELL)
LICENSE #47579

JAMES WHEELER, CCIM
(505) 470-8081 (CELL)
LICENSE #18725