

AFFORDABLE OFFICE SPACE IN SANTA FE

INDIVIDUAL OR COMBINED UNITS



4 Calle Medico Unit C

Santa Fe, NM 87505

LEASE RATE

Unit C (basement): ±966 SF
\$644/mo. (\$8/SF)

ZONING C-1

FEATURES

- Large open carpeted area
- (1) office.
- Bathroom + break area counter
- Enclosed stairway on east side, open stairway on west side.
- Great natural lighting from southern and western windows.
- Excellent location - Easy access to I-25.
- Lots and lots of parking (private, city and curb.
- Close to St. Vincent Regional Medical Center.
- Minutes from Santa Fe Plaza.
- Great curb visibility.

**COMMERCIAL
PROPERTIES, INC**
(505) 216-1500

2019 GALISTEO ST. SUITE L-1 SANTA FE, NM 87505

INFORMATION ENCLOSED IS DEEMED TO BE FROM RELIABLE SOURCES, HOWEVER, IT IS SUBJECT TO CHANGE, WITHDRAWAL FROM THE MARKET AND INDEPENDENT VERIFICATION BY PROSPECTIVE BUYER OR LESSEE, AS A PART OF THEIR DUE DILIGENCE IN DETERMINING THE FEASIBILITY AND ACCURACY OF INFORMATION OF THE PROPERTY FOR THEIR USE.

www.CPI-NM.com

GEORGE JIMENEZ
(505) 470-3346 (CELL)
LICENSE # 18801



**COMMERCIAL
PROPERTIES, INC**
(505) 216-1500

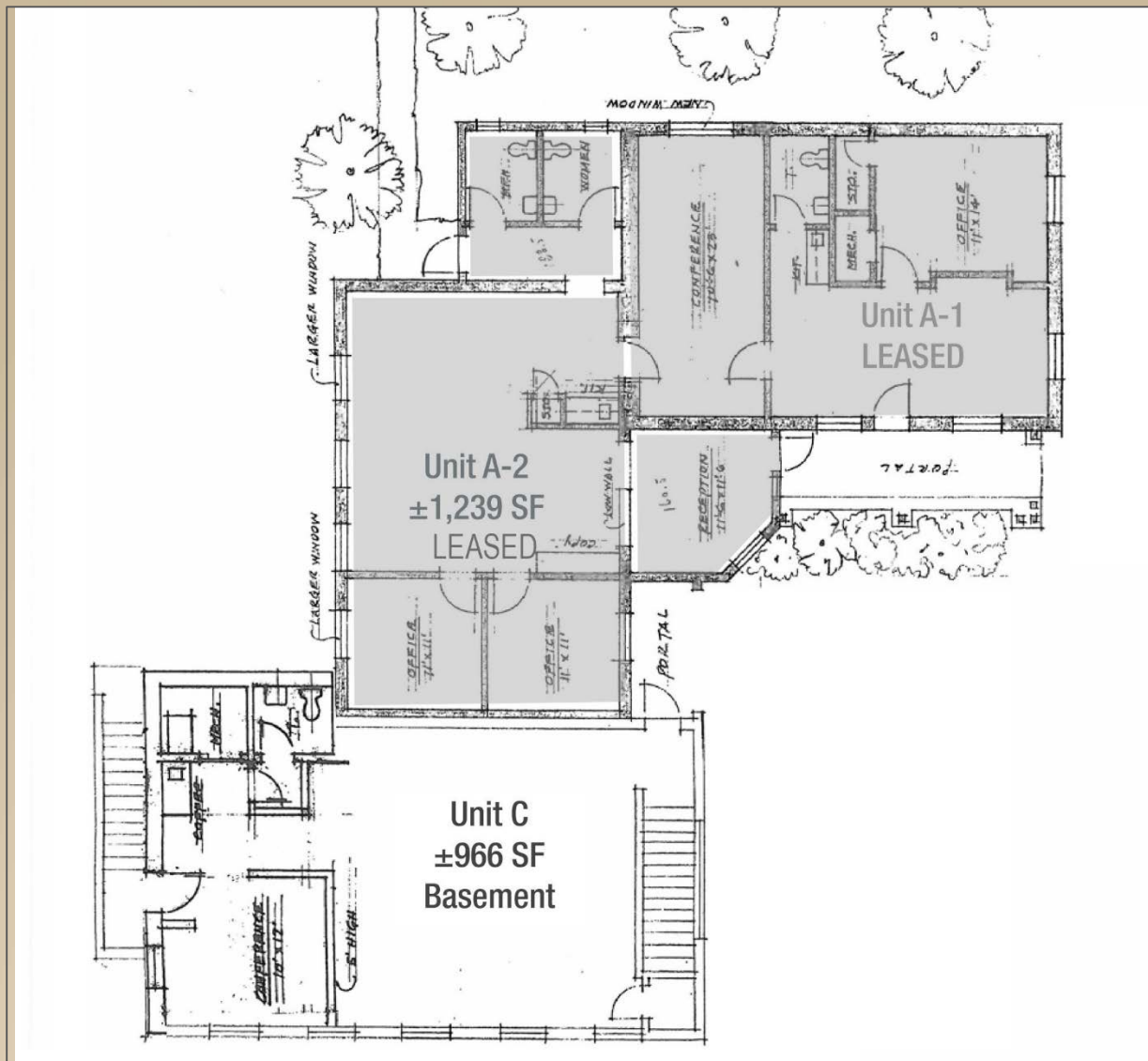
2019 GALISTEO ST. SUITE L-1 SANTA FE, NM 87505

INFORMATION ENCLOSED IS DEEMED TO BE FROM RELIABLE SOURCES, HOWEVER, IT IS SUBJECT TO CHANGE, WITHDRAWAL FROM THE MARKET AND INDEPENDENT VERIFICATION BY PROSPECTIVE BUYER OR LESSEE, AS A PART OF THEIR DUE DILIGENCE IN DETERMINING THE FEASIBILITY AND ACCURACY OF INFORMATION OF THE PROPERTY FOR THEIR USE.

www.CPI-NM.com

GEORGE JIMENEZ
(505) 470-3346 (CELL)
LICENSE # 18801





**COMMERCIAL
PROPERTIES, INC**
(505) 216-1500

2019 GALISTEO ST. SUITE L-1 SANTA FE, NM 87505

INFORMATION ENCLOSED IS DEEMED TO BE FROM RELIABLE SOURCES, HOWEVER, IT IS SUBJECT TO CHANGE, WITHDRAWAL FROM THE MARKET AND INDEPENDENT VERIFICATION BY PROSPECTIVE BUYER OR LESSEE, AS A PART OF THEIR DUE DILIGENCE IN DETERMINING THE FEASIBILITY AND ACCURACY OF INFORMATION OF THE PROPERTY FOR THEIR USE.

WWW.CPI-NM.COM

GEORGE JIMENEZ
(505) 470-3346 (CELL)
LICENSE # 18801



**COMMERCIAL
PROPERTIES, INC**
(505) 216-1500

2019 GALISTEO ST. SUITE L-1 SANTA FE, NM 87505

INFORMATION ENCLOSED IS DEEMED TO BE FROM RELIABLE SOURCES, HOWEVER, IT IS SUBJECT TO CHANGE, WITHDRAWAL FROM THE MARKET AND INDEPENDENT VERIFICATION BY PROSPECTIVE BUYER OR LESSEE, AS A PART OF THEIR DUE DILIGENCE IN DETERMINING THE FEASIBILITY AND ACCURACY OF INFORMATION OF THE PROPERTY FOR THEIR USE.

www.CPI-NM.com

GEORGE JIMENEZ
(505) 470-3346 (CELL)
LICENSE # 18801

	1 mile	3 miles	5 miles
Population			
1990 Population	4,095	48,344	61,212
2000 Population	4,562	48,024	65,746
2010 Population	5,187	50,181	70,916
2015 Population	5,366	51,048	73,162
1990-2000 Annual Rate	1.09%	-0.07%	0.72%
2000-2010 Annual Rate	1.26%	0.43%	0.74%
2010-2015 Annual Rate	0.68%	0.34%	0.63%
2010 Male Population	46.0%	47.9%	48.1%
2010 Female Population	54.0%	52.1%	51.9%
2010 Median Age	52.9	45.0	44.1
In the identified area, the current year population is 70,916. In 2000, the Census count in the area was 65,746. The rate of change since 2000 was 0.74 percent annually. The five-year projection for the population in the area is 73,162, representing a change of 0.63 percent annually from 2010 to 2015. Currently, the population is 48.1 percent male and 51.9 percent female.			
Population by Employment			
Currently, 92.5 percent of the civilian labor force in the identified area is employed and 7.5 percent are unemployed. In comparison, 89.2 percent of the U.S. civilian labor force is employed, and 10.8 percent are unemployed. In five years the rate of employment in the area will be 93.1 percent of the civilian labor force, and unemployment will be 6.9 percent. The percentage of the U.S. civilian labor force that will be employed in five years is 91.2 percent, and 8.8 percent will be unemployed. In 2000, 66.9 percent of the population aged 16 years or older in the area participated in the labor force, and 0.1 percent were in the Armed Forces.			
In the current year, the occupational distribution of the employed population is:			
70.5 percent in white collar jobs (compared to 61.6 percent of the U.S. employment)			
18.1 percent in service jobs (compared to 17.3 percent of U.S. employment)			
11.5 percent in blue collar jobs (compared to 21.1 percent of U.S. employment)			
In 2000, 71.9 percent of the area population drove alone to work, and 7.9 percent worked at home. The average travel time to work in 2000 was 17.8 minutes in the area, compared to the U.S. average of 25.5 minutes.			
Population by Education			
In the current year, the educational attainment of the population aged 25 years or older in the area was distributed as follows:			
11.1 percent had not earned a high school diploma (14.8 percent in the U.S.)			
18.0 percent were high school graduates only (29.6 percent in the U.S.)			
6.6 percent had completed an Associate degree (7.7 percent in the U.S.)			
23.2 percent had a Bachelor's degree (17.7 percent in the U.S.)			
21.2 percent had earned a Master's/Professional/Doctorate Degree (10.4 percent in the U.S.)			
Per Capita Income			
1990 Per Capita Income	\$21,884	\$16,423	\$16,867
2000 Per Capita Income	\$34,024	\$26,665	\$26,524
2010 Per Capita Income	\$44,202	\$33,549	\$33,610
2015 Per Capita Income	\$48,443	\$37,197	\$37,172
1990-2000 Annual Rate	4.51%	4.97%	4.63%
2000-2010 Annual Rate	2.59%	2.27%	2.34%
2010-2015 Annual Rate	1.85%	2.09%	2.04%
Households			
1990 Households	1,673	19,600	24,873
2000 Households	2,067	21,663	29,196
2010 Total Households	2,322	22,508	31,270
2015 Total Households	2,409	22,913	32,275
1990-2000 Annual Rate	2.14%	1.01%	1.62%
2000-2010 Annual Rate	1.14%	0.37%	0.67%
2010-2015 Annual Rate	0.74%	0.36%	0.64%
2010 Average Household Size	2.15	2.16	2.21
The household count in this area has changed from 29,196 in 2000 to 31,270 in the current year, a change of 0.67 percent annually. The five-year projection of households is 32,275, a change of 0.63 percent annually from the current year total. Average household size is currently 2.21, compared to 2.20 in the year 2000. The number of families in the current year is 16,338 in the specified area.			

**COMMERCIAL
PROPERTIES, INC**
(505) 216-1500

2019 GALISTEO ST. SUITE L-1 SANTA FE, NM 87505

INFORMATION ENCLOSED IS DEEMED TO BE FROM RELIABLE SOURCES, HOWEVER, IT IS SUBJECT TO CHANGE, WITHDRAWAL FROM THE MARKET AND INDEPENDENT VERIFICATION BY PROSPECTIVE BUYER OR LESSEE, AS A PART OF THEIR DUE DILIGENCE IN DETERMINING THE FEASIBILITY AND ACCURACY OF INFORMATION OF THE PROPERTY FOR THEIR USE.

WWW.CPI-NM.COM

GEORGE JIMENEZ
(505) 470-3346 (CELL)
LICENSE # 18801

	1 mile	3 miles	5 miles
Households by Income			
Current median household income is \$55,644 in the area, compared to \$54,442 for all U.S. households. Median household income is projected to be \$62,596 in five years. In 2000, median household income was \$41,918, compared to \$30,082 in 1990.			
Current average household income is \$75,238 in this area, compared to \$70,173 for all U.S. households. Average household income is projected to be \$83,160 in five years. In 2000, average household income was \$59,294, compared to \$41,224 in 1990.			
Current per capita income is \$33,610 in the area, compared to the U.S. per capita income of \$26,739. The per capita income is projected to be \$37,172 in five years. In 2000, the per capita income was \$26,524, compared to \$16,867 in 1990.			
Median Household Income			
1990 Median Household Income	\$35,865	\$29,792	\$30,082
2000 Median Household Income	\$51,902	\$41,085	\$41,918
2010 Median Household Income	\$70,936	\$54,066	\$55,644
2015 Median Household Income	\$86,694	\$60,809	\$62,596
1990-2000 Annual Rate	3.77%	3.27%	3.37%
2000-2010 Annual Rate	3.10%	2.72%	2.80%
2010-2015 Annual Rate	4.09%	2.38%	2.38%
Average Household Income			
1990 Average Household Income	\$50,381	\$39,781	\$41,224
2000 Average Household Income	\$71,996	\$58,191	\$59,294
2010 Average Household Income	\$93,266	\$73,316	\$75,238
2015 Average Household Income	\$101,922	\$81,223	\$83,160
1990-2000 Annual Rate	3.63%	3.88%	3.70%
2000-2010 Annual Rate	2.56%	2.28%	2.35%
2010-2015 Annual Rate	1.79%	2.07%	2.02%
2010 Housing			
1990 Total Housing Units	1,723	21,213	26,920
2000 Total Housing Units	2,219	24,073	32,279
2010 Total Housing Units	2,575	25,918	35,712
2015 Total Housing Units	2,703	26,757	37,298
1990 Owner Occupied Housing Units	983	11,597	15,226
1990 Renter Occupied Housing Units	690	8,003	9,647
1990 Vacant Housing Units	106	1,576	2,057
2000 Owner Occupied Housing Units	1,163	12,743	17,725
2000 Renter Occupied Housing Units	904	8,920	11,471
2000 Vacant Housing Units	221	2,357	3,105
2010 Owner Occupied Housing Units	1,253	12,935	18,572
2010 Renter Occupied Housing Units	1,068	9,572	12,698
2010 Vacant Housing Units	253	3,411	4,441
2015 Owner Occupied Housing Units	1,292	13,104	19,094
2015 Renter Occupied Housing Units	1,116	9,810	13,180
2015 Vacant Housing Units	294	3,844	5,023
Currently, 52.0 percent of the 35,712 housing units in the area are owner occupied; 35.6 percent, renter occupied; and 12.4 are vacant. In 2000, there were 32,279 housing units - 54.9 percent owner occupied, 35.5 percent renter occupied, and 9.6 percent vacant. The rate of change in housing units since 2000 is 0.99 percent. Median home value in the area is \$309,652, compared to a median home value of \$157,913 for the U.S. In five years, median value is projected to change by 4.81 percent annually to \$391,545. From 2000 to the current year, median home value change by 5.04 percent annually.			

**COMMERCIAL
PROPERTIES, INC**
(505) 216-1500

2019 GALISTEO ST. SUITE L-1 SANTA FE, NM 87505

INFORMATION ENCLOSED IS DEEMED TO BE FROM RELIABLE SOURCES, HOWEVER, IT IS SUBJECT TO CHANGE, WITHDRAWAL FROM THE MARKET AND INDEPENDENT VERIFICATION BY PROSPECTIVE BUYER OR LESSEE, AS A PART OF THEIR DUE DILIGENCE IN DETERMINING THE FEASIBILITY AND ACCURACY OF INFORMATION OF THE PROPERTY FOR THEIR USE.

WWW.CPI-NM.COM

GEORGE JIMENEZ
(505) 470-3346 (CELL)
LICENSE # 18801