

WAREHOUSE & OFFICE SPACE IN MIDWEST SANTA FE



2882 Trades West Rd
Santa Fe, NM 87508

AVAILABLE SPACES
& LEASE RATES:

~2882~

Unit D
± 1,000 SF ~ \$850/month

ZONING
I-2

FEATURES

- Restroom
- Overhead door
- Evaporative Cooler
- Skylights / Exhaust Fan
- 3-phase electrical power avail.
- Gated outside storage.

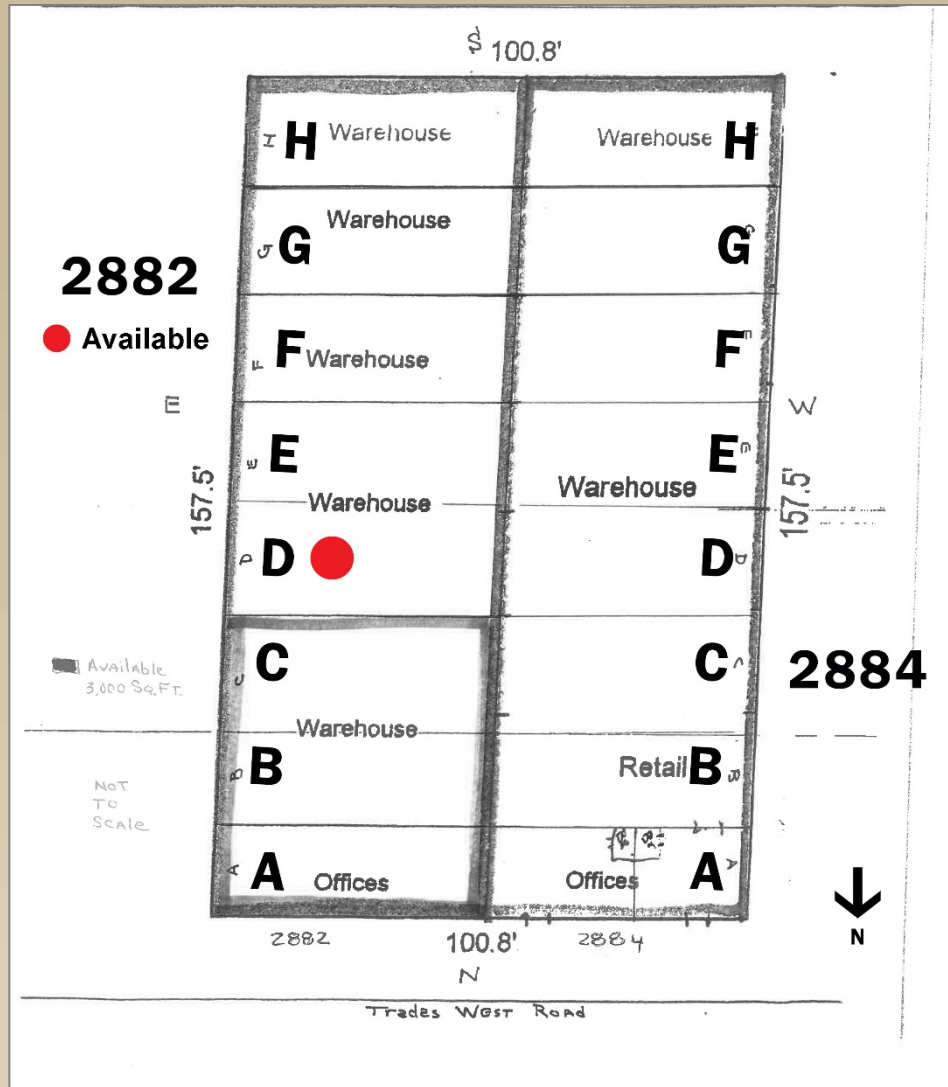
COMMERCIAL
PROPERTIES, INC
(505) 216-1500

2019 GALISTEO ST. SUITE L-1 SANTA FE, NM 87505

INFORMATION ENCLOSED IS DEEMED TO BE FROM RELIABLE SOURCES, HOWEVER, IT IS SUBJECT TO CHANGE, WITHDRAWAL FROM THE MARKET AND INDEPENDENT VERIFICATION BY PROSPECTIVE BUYER OR LESSEE, AS A PART OF THEIR DUE DILIGENCE IN DETERMINING THE FEASIBILITY AND ACCURACY OF INFORMATION OF THE PROPERTY FOR THEIR USE.

WWW.CPI-NM.COM

GEORGE JIMENEZ
(505) 470-3346 (CELL)
LICENSE # 18801



**COMMERCIAL
PROPERTIES, INC**
(505) 216-1500

2019 GALISTEO ST. SUITE L-1 SANTA FE, NM 87505

INFORMATION ENCLOSED IS DEEMED TO BE FROM RELIABLE SOURCES, HOWEVER, IT IS SUBJECT TO CHANGE, WITHDRAWAL FROM THE MARKET AND INDEPENDENT VERIFICATION BY PROSPECTIVE BUYER OR LESSEE, AS A PART OF THEIR DUE DILIGENCE IN DETERMINING THE FEASIBILITY AND ACCURACY OF INFORMATION OF THE PROPERTY FOR THEIR USE.

www.CPI-NM.com

GEORGE JIMENEZ
(505) 470-3346 (CELL)
LICENSE # 18801